



# Winnie Industries

MANUFACTURER OF FASTENING SUPPORTS



**Built Fast. In Stock. Built for You.**

Over  
700 products  
inside . . .

**Winnie Industries** is committed to providing exceptional electrical solutions to support the needs of various industries. Look to us to engineer and manufacture innovative solutions that uphold innovation, strength, and dependability.

**Table of Contents:**

Magnetics.....	4
J Hook System .....	18
Painted J Hooks .....	30
J Hook Trees.....	38
Bridle Rings.....	40
Painted Bridle Rings.....	44
Saddled Bridle Rings.....	46
Structural Attachments.....	48
Electrical .....	51
Low-Voltage Accessories .....	54
316 Stainless Steel .....	57

**The Winnie family of products**

- 

**WJH Series™**  
The WJH Series™ J Hook System delivers a high-quality, versatile, and cost-effective solution for supporting cable pathways in every application.
- 

**WinnieMAG™**  
Designed with a powerful rare earth magnet that provide effortless installation and reliable holding strength.
- 

**UHD Series™**  
The patent-pending UHD Series™ delivers ultra-strong magnetic holding power, specifically engineered for secure mounting and precise positioning on thin metal surfaces.
- 

**T Box™**  
The award-winning T Box™ is a game-changer for prefab installations, eliminating the need for offsets by allowing conduit runs to enter directly into the junction box.
- 

**BlackOUT™**  
The BlackOUT series™ features our top-selling items in a stocked, all-black cable management lineup built to disappear against dark ceilings.
- 

**WhiteOUT™**  
The WhiteOUT series™ keeps things modern, bright and seamless—bringing together our top-selling items in a ready-to-ship, all-white cable management solution designed to disappear against light ceilings.

**Proper Magnet Handling:**

- Always handle neodymium magnets with care, as their powerful attraction can cause them to snap together suddenly, risking finger pinches or other injuries.
- Perform a pull test prior to installation to ensure proper load capacity.
- Keep magnets away from magnetic media such as floppy disks, HDD, magnetic strip credit cards, hotel room keys, and CRT monitors.
- Keep neodymium magnets away from anyone with a pacemaker.
- Store magnets in closed containers so they don't attract metal.
- If several magnets are being stored, they should be stored in attracting positions.
- Magnets are not toys and should be kept away from children and pets.

**Warning:** Winnie Industries products shall be installed properly, in a proper environment, and used under normal conditions in accordance with any labels or instructions. Improper installation, misuse, overload, abuse, or alteration in any manner, or overall, not used under normal conditions or not in accordance with any labels, instructions or industry standards may cause product malfunction, property damage, serious bodily injury and/or death, and void your warranty. All installations must comply with governing codes, regulations, and job site requirements. Always consult your Authority Having Jurisdiction (AHJ) for specific regulatory guidelines.

All cULus Listed products meet the requirements of one of the following UL standards: UL1565, UL2239, or UL514A. Please note not all items are UL listed. No UL load rating on magnetic cable holders.

Product specifications, packaging, or design are subject to change without notice. We are not responsible for typographical errors in product descriptions or specifications.

**Looking for Winnie Industries magnet, cable fastening, and electrical solutions?** Our innovative products are available across the U.S. and Canada through trusted electrical, datacom, security, and industrial distribution partners—ready to support your next install, wherever the job takes you.

Dear Valued Partners,

It's incredible to reflect on how far Winnie Industries has come since launching in 2015— back when I was working out of my parents' garage with a dream and a few prototypes. Thanks to your support and our team's dedication, we've grown into a trusted manufacturer with a portfolio of over 700 core products and robust customization capabilities. Our new product development remains strong, with the goal of delivering high-quality, problem-solving fastening hardware to installers across the U.S. and Canada.

From j hooks and bridle rings to our patented T Box™ and magnetic innovations, we're proud to deliver hardware that makes installs faster, cleaner, and easier. With over a decade of experience, five issued patents, and more pending, we're committed to pushing the industry forward—whether through NEMA-compliant solutions or everyday labor-saving upgrades. Whether your project calls for painted j hooks, custom assemblies, or support on a unique install, we're ready to help. You can count on us to deliver—with a smile every time.

Thank you for being part of the Winnie Industries journey. We're excited for what's ahead and honored to keep you fastened.

Sincerely,



Jonathan Winnie  
President  
Winnie Industries





# Magnetics

**Innovative magnetic solutions for structured cabling, low-voltage systems, panel builds, and industrial automation—engineered for efficiency to simplify every install**



- **High-Grade Neodymium Magnet**  
Industry leading pull force
- **Black or White Epoxy Coated**  
Offers superior protection against corrosion
- **Durable Design**  
Long-lasting performance in a variety of applications
- **Permanent or Temporary**  
Easily reuse and reposition
- **Unrival Sticking Power**  
Adheres through oil, grease, dirt, and extreme temperatures
- **Wi-Fi Friendly**  
Does not interfere with ethernet or Wi-Fi signals
- **Save Install Time & Labor Cost**  
No tools, no drilling, or adhesives required
- **UL and CUL Listed**  
Meets safety and reliability standards

## MAGNETICS

**WinnieMAG™** and exclusive **UHD Series** Neodymium Pot Magnets are a permanent, strong, versatile, and reliable solution for holding, mounting, and positioning on ferromagnetic surfaces



### UHD 150lb Mounting Magnet

**Exclusive**



WUMAG-1420UHD

- Ultra-strong neodymium magnet, specially engineered for a secure hold on any ferromagnetic surface
- Delivers holding strength that surpasses conventional neodymium pot magnets
- Low-profile form factor maintains unbeatable hold even on thin metal
- Vertical pull force of up to 150lbs on sheet metal ensures strong and reliable adhesion
- Thread hole allows the attachment of a wide variety of brackets, hooks, and other holding attachments

Part #	Pull Force	Size	Color	Thread	Unit Pkg
WUMAG-1420UHD	150lb	2" x 3/8"	Black	1/4-20	5

Patent Pending

### WinnieMAG™ Threaded Pot Magnet



WMAG1420  
Top and Bottom

- Super-strong, versatile, reliable, and durable in a slim profile design
- Protective, nickel-plated steel cup provides excellent wear resistance and hardness
- Threaded hole enables the attachment of a wide variety of brackets, hooks, and other holding attachments
- Screw-stopping feature prevents breakthrough by limiting the depth of penetration

Part #	Pull Force	Grade	Size	Thread	Unit Pkg
WMAG1420	100lb	N35	2" x 3/8"	1/4-20	100
WMAG1420-10	100lb	N35	2" x 3/8"	1/4-20	10
WMAG1420-52	100lb	N52	2" x 3/8"	1/4-20	100
WMAG40	40lb	N35	1" x 3/4"	1/4-20	100
WMAG40-10	40lb	N35	1" x 3/4"	1/4-20	10

### WinnieMAG™ Counterbored Pot Magnet



WMAG16



WMAG26BK Bottom



WMAG26BK Top



WMAG26WH

- Strong, versatile, reliable, and durable in a slim profile design
- Protective, nickel-plated, epoxy-coated cup provides excellent wear resistance and hardness
- Countersunk 5mm hole for cylindrical head screw or rivet allows for attachment of hardware, mounting to ferromagnetic surfaces



Part #	Pull Force	Grade	Size	Color	Unit Pkg
WMAG26	26lb	N45M	1" x 5/32"	Silver	100
WMAG26-10	26lb	N45M	1" x 5/32"	Silver	10
WMAG26BK	26lb	N45M	1" x 5/32"	Black	100
WMAG26BK-10	26lb	N45M	1" x 5/32"	Black	10
WMAG26WH	26lb	N45M	1" x 5/32"	White	100
WMAG26WH-10	26lb	N45M	1" x 5/32"	White	10
WMAG16	16lb	N45M	3/4" x 5/32"	Silver	100
WMAG16-10	16lb	N45M	3/4" x 5/32"	Silver	10
WMAG16BK	16lb	N45M	3/4" x 5/32"	Black	100
WMAG16BK-10	16lb	N45M	3/4" x 5/32"	Black	10
WMAG16WH	16lb	N45M	3/4" x 5/32"	White	100
WMAG16WH-10	16lb	N45M	3/4" x 5/32"	White	10

WinnieMAG™ Hook & Loop Cable Management

Securely route and manage cables using strong WinnieMAG™ magnets with an innovatively designed mount to organize your workspace, cabinet, or equipment rack

- Securely cradles and organizes the cable bundle preventing pinching or tangling
  - Designed for hook & loop straps and cable ties up to 3/4" wide
  - Saves time and reduces labor costs compared to traditional mounting methods
  - Damage-free installation as no drilling or adhesives are required
  - Use for permanent or temporary installations
- Reusable and repositionable for ultimate flexibility to accommodate changing needs or layouts
  - Maintains adhesion even when exposed to oil, grease, dirt, and extreme temperatures
  - Durable, plenum-rated copolymer plastic mount provides long-lasting reliability in wet or dry environments
  - Black plastic provides UV resistance to avoid degradation caused by ultraviolet rays



100 lb Magnetic Hook & Loop Cable Manager



WMAG1420HLBK



WMAG1420HLWH

- Super-strong neodymium rare earth magnet provides a secure hold onto any ferromagnetic surface
- Vertical pull force of up to 100lbs provides secure adhesion

Part #	Pull Force	Grade	Slot Width	Color	Unit Pkg
WMAG1420HLBK	100lb	N35	3/4"	Black/Silver	100
WMAG1420HLBK-10	100lb	N35	3/4"	Black/Silver	10
WMAG1420HLWH	100lb	N35	3/4"	White/Silver	100
WMAG1420HLWH-10	100lb	N35	3/4"	White/Silver	10



Resealable 10-packs deliver smart storage and unbeatable convenience



26lb Magnetic Hook & Loop Cable Manager



WMAG26HLAB



WMAG26HLBK



WMAG26HLWH

- Exceptionally strong neodymium rare earth magnet provides a secure hold onto any ferromagnetic surface
- Vertical pull force of up to 26lbs provides secure adhesion
- Available in sleek black or modern white to blend with surroundings

Part #	Pull Force	Grade	Slot Width	Color	Unit Pkg
WMAG26HLAB	26lb	N45M	3/4"	Black	50
WMAG26HLAB-10	26lb	N45M	3/4"	Black	10
WMAG26HLAW	26lb	N45M	3/4"	White	50
WMAG26HLAW-10	26lb	N45M	3/4"	White	10
WMAG26HLBK	26lb	N45M	3/4"	Black/Silver	50
WMAG26HLBK-10	26lb	N45M	3/4"	Black/Silver	10
WMAG26HLWH	26lb	N45M	3/4"	White/Silver	50
WMAG26HLWH-10	26lb	N45M	3/4"	White/Silver	10

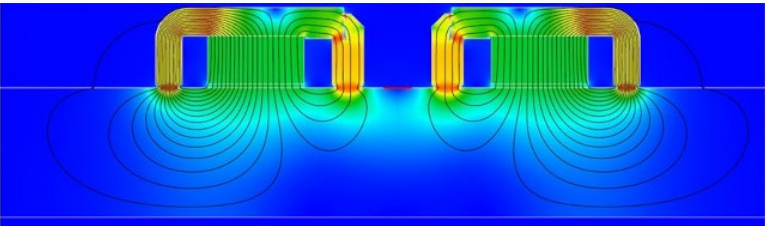
26 lb Magnetic Clamp



WMAG26CC050

- Exceptionally strong neodymium rare earth magnet provides a secure hold onto any ferromagnetic surface
- Route, secure, and manage flexible tubing, air hoses, fluid lines, rope, and cable up to 1/2" in diameter
- Easily opens and snaps closed to provide a secure hold
- Use in residential, commercial, or industrial applications

Part #	Pull Force	Grade	Size	Color	Unit Pkg
WMAG26CC050AB	26lb	N45M	1/2"	Black	100
WMAG26CC050AB-10	26lb	N45M	1/2"	Black	10



WinnieMAG™ in Action: Focused Magnetic Field at the Fastening Surface

The illustration demonstrates how WinnieMAG pot magnets contain and concentrate magnetic force. Built with neodymium, they reduce external interference and boost adhesion at the fastening surface. A zinc cup surrounds the magnet, channeling the magnetic field directly toward the mounting surface—delivering enhanced grip, clean containment, and focused strength for precision-critical applications.

WinnieMAG™ Cable Tie Cable Management

Securely route and manage cables using strong WinnieMAG™ magnets with an innovatively designed mount to organize your workspace, cabinet, or equipment rack

- Designed for cable ties and straps up to 1/2" wide
- Permanent fixation but can easily be reused and repositioned offering maximum flexibility—no tools required
- Maintains adhesion even when exposed to oil, grease, dirt, and extreme temperatures



- Durable, plenum-rated copolymer plastic mount provides long-lasting reliability in wet or dry environments
- Black plastic provides UV resistance to avoid degradation caused by ultraviolet rays

100 lb Magnetic Cable Tie Manager



WMAG1420CT38UV

- Super strong neodymium rare earth magnet provides a secure hold onto any ferromagnetic surface
- Vertical pull force of up to 100lbs provides secure adhesion

Part #	Pull Force	Grade	Slot Width	Color	Unit Pkg
WMAG1420CT38UV	100lb	N35	0.38"	Black/Silver	100
WMAG1420CT38UV-10	100lb	N35	0.38"	Black/Silver	10
WMAG1420CT38WH	100lb	N35	0.38"	White/Silver	100
WMAG1420CT38WH-10	100lb	N35	0.38"	White/Silver	10
WMAG1420CT50UV	100lb	N35	0.50"	Black/Silver	100
WMAG1420CT50UV-10	100lb	N35	0.50"	Black/Silver	10
WMAG1420CT50WH	100lb	N35	0.50"	White/Silver	100
WMAG1420CT50WH-10	100lb	N35	0.50"	White/Silver	10

26 lb Magnetic Cable Tie Manager



WMAG26CT38AB



WMAG26CT38AW

- Exceptionally strong neodymium rare earth magnet provides a secure hold onto any ferromagnetic surface
- Vertical pull force of up to 26lbs provides secure adhesion
- Sleek black or modern white design aesthetically blends into matching environment
- Epoxy-coated cup provides long-lasting performance and wear resistance

Part #	Pull Force	Grade	Slot Width	Color	Unit Pkg
WMAG26CTAB	26lb	N45M	0.19"	Black	100
WMAG26CTAB-10	26lb	N45M	0.19"	Black	10
WMAG26CTAW	26lb	N45M	0.19"	White	100
WMAG26CTAW-10	26lb	N45M	0.19"	White	10
WMAG26CT38AB	26lb	N45M	0.38"	Black	100
WMAG26CT38AB-10	26lb	N45M	0.38"	Black	10
WMAG26CT38AW	26lb	N45M	0.38"	White	100
WMAG26CT38AW-10	26lb	N45M	0.38"	White	10
WMAG26CT50AB	26lb	N45M	0.50"	Black	100
WMAG26CT50AB-10	26lb	N45M	0.50"	Black	10
WMAG26CT50AW	26lb	N45M	0.50"	White	100
WMAG26CT50AW-10	26lb	N45M	0.50"	White	10



2025 NECA Show Stopper Winner



26lb Magnetic Cable Tie Manager



WMAG26CTUV



WMAG26CTWH

- Exceptionally strong neodymium rare earth magnet provides a secure hold onto any ferromagnetic surface
- Zinc-plated metal cut
- Vertical pull force of up to 26lbs provides secure adhesion

Part #	Pull Force	Grade	Slot Width	Color	Unit Pkg
WMAG26CTUV	26lb	N45M	0.19"	Black/Silver	100
WMAG26CTUV-10	26lb	N45M	0.19"	Black/Silver	10
WMAG26CTWH	26lb	N45M	0.19"	White/Silver	100
WMAG26CTWH-10	26lb	N45M	0.19"	White/Silver	10

16lb Magnetic Cable Tie Manager



WMAG16CTAW



WMAG16CTUV



WMAG16CTWH

- Amazingly strong neodymium rare earth magnet provides a secure hold onto any ferromagnetic surface
- Vertical pull force of up to 16lbs provides secure adhesion
- Sleek black or modern white design aesthetically blends into matching environment
- Epoxy-coated cup provides long-lasting performance and wear resistance

Part #	Pull Force	Grade	Slot Width	Color	Unit Pkg
WMAG16CTAB	16lb	N45M	0.19"	Black	100
WMAG16CTAB-10	16lb	N45M	0.19"	Black	10
WMAG16CTAW	16lb	N45M	0.19"	White	100
WMAG16CTAW-10	16lb	N45M	0.19"	White	10
WMAG16CTUV	16lb	N45M	0.19"	Black/Silver	100
WMAG16CTUV-10	16lb	N45M	0.19"	Black/Silver	10
WMAG16CTWH	16lb	N45M	0.19"	White/Silver	100
WMAG16CTWH-10	16lb	N45M	0.19"	White/Silver	10

5lb Magnetic Cable Tie Manager



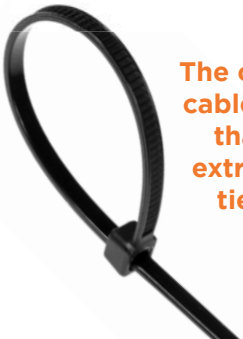
WMAG5CTBK

- Easily organize and secure cables with a lightweight yet powerful magnet
- Vertical pull force of up to 5lbs provides secure adhesion

Part #	Pull Force	Slot Width	Color	Unit Pkg
WMAG5CTBK	5lb	0.19"	Black	100
WMAG5CTBK-10	5lb	0.19"	Black	10

Common Cable Tie Widths and Sizing Guide

Tie Width	Typical Use Case	Recommended Manager
2.5mm	Light-duty, electronics, small bundles	WMAGxxCTxx
3.6mm	General-purpose, home/office wiring	WMAGxxCTxx
4.8mm	Industrial, structured cabling	WMAGxxCTxx
7.6mm	Heavy-duty, HVAC, conduit bundles	WMAGxxCT38xx
9.0mm	Extra heavy-duty, outdoor installs	WMAGxxCT38xx
12.7mm	Maximum-strength, large cable runs	WMAGxxCT50xx



The only magnetic cable tie manager that supports extra-wide cable ties or straps



WinnieMAG™ Cable Management with Locking Gate

Strong and versatile cable management solution that streamlines installation, cuts costs, and ensures secure, efficient cable organization



- **Patented** locking gate feature provides a reliable hold on cables
- Durable, plenum-rated copolymer plastic mount provides long-lasting reliability in wet or dry environments
- Quick and hassle-free installation saves both time and money with no tools need
- Available in sleek black or modern white to blend with surroundings

26lb Magnetic Cable Holder with Locking Gate



WMCH100AB



WMCH100AW

- Exceptionally strong neodymium rare earth magnet provides a secure hold onto any ferromagnetic surface
- Vertical pull force of up to 26lbs provides secure adhesion
- UL/CUL listed

Part #	Mag Force	Grade	Size	Color	Unit Pkg
WMCH125AB	26lb	N45M	1-1/4"	Black	50
WMCH125AB-10	26lb	N45M	1-1/4"	Black	10
WMCH125AW	26lb	N45M	1-1/4"	White	50
WMCH125AW-10	26lb	N45M	1-1/4"	White	10
WMCH125BK	26lb	N45M	1-1/4"	Black/Silver	50
WMCH125BK-10	26lb	N45M	1-1/4"	Black/Silver	10
WMCH125WH	26lb	N45M	1-1/4"	White/Silver	50
WMCH125WH-10	26lb	N45M	1-1/4"	White/Silver	10
WMCH100AB	26lb	N45M	1"	Black	50
WMCH100AB-10	26lb	N45M	1"	Black	10
WMCH100AW	26lb	N45M	1"	White	50
WMCH100AW-10	26lb	N45M	1"	White	10
WMCH100WH	26lb	N45M	1"	White/Silver	50
WMCH100WH-10	26lb	N45M	1"	White/Silver	10

16lb Magnetic Cable Holder with Locking Gate



WMCH050BK



WMCH050WH

- Amazingly strong neodymium rare earth magnet provides a secure hold onto any ferromagnetic surface
- Vertical pull force of up to 16lbs provides secure adhesion
- UL/CUL listed

Part #	Mag Force	Grade	Size	Color	Unit Pkg
WMCH075AB	16lb	N45M	3/4"	Black	100
WMCH075AB-10	16lb	N45M	3/4"	Black	10
WMCH075AW	16lb	N45M	3/4"	White	100
WMCH075AW-10	16lb	N45M	3/4"	White	10
WMCH075WH	16lb	N45M	3/4"	White/Silver	100
WMCH075WH-10	16lb	N45M	3/4"	White/Silver	10

Part #	Mag Force	Grade	Size	Color	Unit Pkg
WMCH050AB	16lb	N45M	1/2"	Black	100
WMCH050AB-10	16lb	N45M	1/2"	Black	10
WMCH050AW	16lb	N45M	1/2"	White	100
WMCH050AW-10	16lb	N45M	1/2"	White	10
WMCH050BK	16lb	N45M	1/2"	Black/Silver	100
WMCH050BK-10	16lb	N45M	1/2"	Black/Silver	10
WMCH050WH	16lb	N45M	1/2"	White/Silver	100
WMCH050WH-10	16lb	N45M	1/2"	White/Silver	10

Magnetic Circuit Board Standoff Kit



WMAG16PCB-xx



WSMAG4PCB-4

- Strong, versatile solution for quickly mounting boards and accessories in any metal enclosure or backplane
- Includes mounting hardware

Part #	Pull Force	Grade	Size	Unit Pkg
WMAG16PCB-4	16lb	N45M	5/8"	4
WMAG16PCB-8	16lb	N45M	5/8"	8
WMAG16PCB-12	16lb	N45M	5/8"	12
WMAG16PCB-24	16lb	N45M	5/8"	24
WSMAG4PCB-4	4lb	N42	M3	4



26lb Magnetic Security Camera Mounting Kit



W3MAG26-2T

- Exceptionally strong, versatile solution for quickly mounting security cameras and other equipment to any ferromagnetic surface
- Includes 3x 26lb magnets and 3x 3/4" & 3x 1" #6-32 mounting hardware and lock nut

Part #	Pull Force	Grade	Color	Unit Pkg
W3MAG26-2T	26lb	N45M	Silver	10



26lb Magnetic Multi-Purpose Mini Hook



WMAG26HK

- Exceptional strength and versatility make them ideal for securely holding and organizing various items

Part #	Pull Force	Grade	Color	Unit Pkg
WMAG26HK	26lb	N45M	Silver	100
WMAG26HK-10	26lb	N45M	Silver	10

100lb Mounting Magnet



WMAG1420438



WMAG14204TM

- Super-strong magnetic mounting solution engineered for lasting, seamless placement and secure retention of tools, fixtures, equipment, sensors, lights, cameras, display panels, signs, and more

Part #	Pull Force	Grade	Mount	Color	Unit Pkg
WMAG1420412	100lb	N35	1/2" Screw	Silver	20
WMAG1420438	100lb	N35	3/8" Screw	Silver	20
WMAG14204TM	100lb	N35	Male Stud w/Nut	Silver	20
WMAG1420AC	100lb	N35	Angle Bracket	Silver	20

Magnetic D Ring



WDR-300MAG1420

- Super-strong magnetic solution provided a reliable cable management solution for routing and securing all types of insulated cables in multiple applications

Part #	Pull Force	Grade	Size	Color	Unit Pkg
WDR-200MAG1420	100lb	N35	2"	Silver	10
WDR-300MAG1420	100lb	N35	3"	Silver	10
WDR-500MAG1420	100lb	N35	5"	Silver	10



WinnieMAG™ Bridle Rings

Super-strong, fast, and cost-effective alternative cable management solution for network cable pathway applications

- Pre-assembled with 26lb or 100lb WinnieMAG Mounting Magnet for organizing and routing cables along vertical or horizontal surface
- Bridle ring crafted from heavy-duty, zinc plated steel which allows for great durability & corrosion resistance
- Quick & easy to install without specialized tools or equipment
- Adheres through oil, grease, dirt, and extreme temperatures
- Creates a distribution pathway for category cable, PoE, fire alarm cable, low-voltage cable, fiber cable, signal, and control cable

Bridle Ring with 100lb WinnieMAG™ Magnet, 1.5" Stem



WBRL125MAG

- Super strong neodymium rare earth magnet provides a secure hold onto any ferromagnetic surface
- Vertical pull force of up to 100lbs provides secure adhesion

Part #	Size	Pull Force	Grade	Color	Unit Pkg
WBRL125MAG	1-1/4"	100lb	N35	Silver	100
WBRL125MAG-10	1-1/4"	100lb	N35	Silver	10
WBRL200MAG	2"	100lb	N35	Silver	100
WBRL200MAG-10	2"	100lb	N35	Silver	10
WBRL400MAG	4"	100lb	N35	Silver	100
WBRL400MAG-10	4"	100lb	N35	Silver	10

Bridle Ring with 100lb WinnieMAG™ Magnet, Short Stem



WBRL125MAG

- Patented, low-profile design delivers strong holding power, prevents tipping
- Vertical pull force of up to 100lbs provides secure adhesion

Part #	Size	Pull Force	Grade	Color	Unit Pkg
WBRL125MAG	1-1/4"	100lb	N35	Silver	100
WBRL125MAG-10	1-1/4"	100lb	N35	Silver	10
WBRL200MAG	2"	100lb	N35	Silver	100
WBRL200MAG-10	2"	100lb	N35	Silver	10

Patent US D917,266 S

Bridle Ring with 26lb WinnieMAG™ Magnet, Short Stem



WBRL075MAG

- Vertical pull force of up to 26lbs provides secure adhesion

Part #	Size	Pull Force	Grade	Color	Unit Pkg
WBRL075MAG	3/4"	26lb	N45M	Silver	100
WBRL075MAG-10	3/4"	26lb	N45M	Silver	10
WBRL075MAGBK	3/4"	26lb	N45M	Black	100
WBRL075MAGBK-10	3/4"	26lb	N45M	Black	10
WBRL075MAG	3/4"	26lb	N45M	Silver	100
WBRL075MAG-10	3/4"	26lb	N45M	Silver	10



WinnieMAG™ Painted Bridle Rings

Super-strong, cost-effective color-coded cable management system for identification and organization of cable pathways



Painted Bridle Ring with 100lb WinnieMAG™ Magnet, 1.5" Stem



- Super strong neodymium rare earth magnet provides a secure hold onto any ferromagnetic surface
- Vertical pull force of up to 100lbs provides secure adhesion

Part #	Size	Pull Force	Grade	Color	Unit Pkg
WBRL125BKMAG	1-1/4"	100lb	N35	Black/Silver	100
WBRL125BUMAG	1-1/4"	100lb	N35	Blue/Silver	100
WBRL125RDMAG	1-1/4"	100lb	N35	Red/Silver	100
WBRL125WHMAG	1-1/4"	100lb	N35	White/Silver	100
WBRL125YLMAG	1-1/4"	100lb	N35	Yellow/Silver	100
WBRL200BKMAG	2"	100lb	N35	Black/Silver	100
WBRL200BUMAG	2"	100lb	N35	Blue/Silver	100
WBRL200RDMAG	2"	100lb	N35	Red/Silver	100
WBRL200WHMAG	2"	100lb	N35	White/Silver	100
WBRL200YLMAG	2"	100lb	N35	Yellow/Silver	100

Painted Bridle Ring with 100lb WinnieMAG Magnet, Short Stem



WBRL200RDMAG

- Patented, low-profile design delivers strong holding power, prevents tipping
- Vertical pull force of up to 100lbs provides secure adhesion

Part #	Size	Pull Force	Grade	Color	Unit Pkg
WBRL200RDMAG	1-1/4"	100lb	N35	Red/Silver	100
WBRL200RDMAG	2"	100lb	N35	Red/Silver	100

Patent US D917,266 S

Saddled Bridle Ring with 100lb WinnieMAG™ Magnet



WBRL200SDLMAG

- Super strong neodymium rare earth magnet provides a secure hold onto any ferromagnetic surface
- Vertical pull force of up to 100lbs provides secure adhesion
- Saddle ensures proper bend radius for high-performance category cable & fiber
- AH-2 plenum rated for use in air handling systems

Part #	Size	Pull Force	Grade	Color	Unit Pkg
WBRL200SDLMAG	2"	100lb	N35	Yellow/Silver	100
WBRL200SDLBKMAG	2"	100lb	N35	Black/Silver	100
WBRL200SDLWHMAG	2"	100lb	N35	White/Silver	100
WBRL200SDLMAG	2"	100lb	N35	Yellow/Silver	100
WBRL400SDLMAG	4"	100lb	N35	Yellow/Silver	100
WBRL400SDLBKMAG	4"	100lb	N35	Black/Silver	100
WBRL400SDLWHMAG	4"	100lb	N35	White/Silver	100



WinnieMAG™ Magnetic J Hooks

Super-strong, fast, and cost-effective alternative cable management solution for network cable pathway applications

- Pre-assembled with 100lb WinnieMAG Mounting Magnet for organizing and routing cables along walls or ceilings
- Super strong neodymium rare earth magnet provides a secure hold onto any ferromagnetic surface
- Vertical pull force of up to 100lbs provides secure adhesion
- J hook crafted from heavy-duty pre-galvanized steel
- Quick & easy to install without specialized tools or equipment
- Creates a distribution pathway for category cable, PoE, low-voltage, coax, signal & control cable, innerduct, and tubing
- Complies with NEC and TIA/EIA requirements for structured cabling systems



Magnetic J Hook, 100lb WinnieMAG™ Magnet, Overhead Mount, 360° Rotation



- For ceiling and other overhead mount applications

Part #	Size	Pull Force	Grade	Color	Unit Pkg
WJH12ACMAG	3/4"	100lb	N35	Silver	100
WJH21ACMAG	1-5/16"	100lb	N35	Silver	100
WJH32ACMAG	2"	100lb	N35	Silver	100
WJH64ACMAG	4"	100lb	N35	Silver	25
WJH96ACMAG	6"	100lb	N35	Silver	25



WJH21ACMAG

Magnetic J Hook, 100lb WinnieMAG™ Magnet, Wall Mount



- For wall mount or other vertical mount applications

Part #	Size	Pull Force	Grade	Color	Unit Pkg
WJH12MAG	3/4"	100lb	N35	Silver	100
WJH21MAG	1-5/16"	100lb	N35	Silver	100
WJH32MAG	2"	100lb	N35	Silver	100
WJH64MAG	4"	100lb	N35	Silver	25
WJH96MAG	6"	100lb	N35	Silver	25



WJH21MAG



Industry's sole  
100lb Magnetic J Hook  
Built to outperform



WinnieMAG™ Color Magnetic J Hooks



Super-strong, versatile color-coded cable management system for identification and organization of cable pathways



Magnetic Painted J Hook, 100lb WinnieMAG™ Magnet, Overhead Mount, 360° Rotation

- For ceiling and other overhead mount applications

Part #	Size	Pull Force	Grade	Color	Unit Pkg
WJH12BKACMAG	3/4"	100lb	N35	Black/Silver	100
WJH12BUACMAG	3/4"	100lb	N35	Blue/Silver	100
WJH12GRACMAG	3/4"	100lb	N35	Green/Silver	100
WJH12ORACMAG	3/4"	100lb	N35	Orange/Silver	100
WJH12PUACMAG	3/4"	100lb	N35	Purple/Silver	100
WJH12RDACMAG	3/4"	100lb	N35	Red/Silver	100
WJH12WHACMAG	3/4"	100lb	N35	White/Silver	100
WJH12YLACMAG	3/4"	100lb	N35	Yellow/Silver	100
WJH21BKACMAG	1-5/16"	100lb	N35	Black/Silver	100
WJH21BUACMAG	1-5/16"	100lb	N35	Blue/Silver	100
WJH21GRACMAG	1-5/16"	100lb	N35	Green/Silver	100
WJH21ORACMAG	1-5/16"	100lb	N35	Orange/Silver	100
WJH21PUACMAG	1-5/16"	100lb	N35	Purple/Silver	100
WJH21RDACMAG	1-5/16"	100lb	N35	Red/Silver	100
WJH21WHACMAG	1-5/16"	100lb	N35	White/Silver	100
WJH21YLACMAG	1-5/16"	100lb	N35	Yellow/Silver	100
WJH32BKACMAG	2"	100lb	N35	Black/Silver	100
WJH32BUACMAG	2"	100lb	N35	Blue/Silver	100
WJH32GRACMAG	2"	100lb	N35	Green/Silver	100
WJH32ORACMAG	2"	100lb	N35	Orange/Silver	100
WJH32PUACMAG	2"	100lb	N35	Purple/Silver	100
WJH32RDACMAG	2"	100lb	N35	Red/Silver	100
WJH32WHACMAG	2"	100lb	N35	White/Silver	100
WJH32YLACMAG	2"	100lb	N35	Yellow/Silver	100
WJH64BKACMAG	4"	100lb	N35	Black/Silver	25
WJH64BUACMAG	4"	100lb	N35	Blue/Silver	25
WJH64GRACMAG	4"	100lb	N35	Green/Silver	25
WJH64ORACMAG	4"	100lb	N35	Orange/Silver	25
WJH64PUACMAG	4"	100lb	N35	Purple/Silver	25
WJH64RDACMAG	4"	100lb	N35	Red/Silver	25
WJH64WHACMAG	4"	100lb	N35	White/Silver	25
WJH64YLACMAG	4"	100lb	N35	Yellow/Silver	25

Magnetic Painted J Hook, 100lb WinnieMAG™ Magnet, Wall Mount

- For wall mount applications

Part #	Size	Pull Force	Grade	Color	Unit Pkg
WJH12BKMAG	3/4"	100lb	N35	Black/Silver	100
WJH12BUMAG	3/4"	100lb	N35	Blue/Silver	100
WJH12GRMAG	3/4"	100lb	N35	Green/Silver	100
WJH12ORMAG	3/4"	100lb	N35	Orange/Silver	100
WJH12PUMAG	3/4"	100lb	N35	Purple/Silver	100
WJH12RDMAG	3/4"	100lb	N35	Red/Silver	100
WJH12WHMAG	3/4"	100lb	N35	White/Silver	100
WJH12YLMAG	3/4"	100lb	N35	Yellow/Silver	100
WJH21BKMAG	1-5/16"	100lb	N35	Black/Silver	100
WJH21BUMAG	1-5/16"	100lb	N35	Blue/Silver	100
WJH21GRMAG	1-5/16"	100lb	N35	Green/Silver	100
WJH21ORMAG	1-5/16"	100lb	N35	Orange/Silver	100
WJH21PUMAG	1-5/16"	100lb	N35	Purple/Silver	100
WJH21RDMAG	1-5/16"	100lb	N35	Red/Silver	100
WJH21WHMAG	1-5/16"	100lb	N35	White/Silver	100
WJH21YLMAG	1-5/16"	100lb	N35	Yellow/Silver	100
WJH32BKMAG	2"	100lb	N35	Black/Silver	100
WJH32BUMAG	2"	100lb	N35	Blue/Silver	100
WJH32GRMAG	2"	100lb	N35	Green/Silver	100
WJH32ORMAG	2"	100lb	N35	Orange/Silver	100
WJH32PUMAG	2"	100lb	N35	Purple/Silver	100
WJH32RDMAG	2"	100lb	N35	Red/Silver	100
WJH32WHMAG	2"	100lb	N35	White/Silver	100
WJH32YLMAG	2"	100lb	N35	Yellow/Silver	100
WJH64BKMAG	4"	100lb	N35	Black/Silver	25
WJH64BUMAG	4"	100lb	N35	Blue/Silver	25
WJH64GRMAG	4"	100lb	N35	Green/Silver	25
WJH64ORMAG	4"	100lb	N35	Orange/Silver	25
WJH64PUMAG	4"	100lb	N35	Purple/Silver	25
WJH64RDMAG	4"	100lb	N35	Red/Silver	25
WJH64WHMAG	4"	100lb	N35	White/Silver	25
WJH64YLMAG	4"	100lb	N35	Yellow/Silver	25





UHD Magnetic Bridle Rings

UHD Series delivers ultra-strong, quick-mounting alternative cable management solution for network cable pathway applications

- Pre-assembled with 150lb UHD Mounting Magnet for organizing and routing cables along vertical or horizontal surface
  - Bridle ring crafted from heavy-duty, zinc plated steel which allows for great durability & corrosion resistance
  - Engineered for maximum adhesion to thin metal
- Quick & easy to install without specialized tools or equipment
  - Powerful surface magnetic attraction maintains a firm grip and resists sliding like other pot magnets
  - Creates a distribution pathway for category cable, PoE, fire alarm cable, low-voltage cable, fiber cable, signal, and control cable

Bridle Ring with 150lb UHD Magnet, 1.5" Stem



WUMAG-WBR4T200

- Vertical pull force of up to 150lbs provides secure adhesion

Part #	Size	Pull Force	Color	Unit Pkg
WUMAG-WBR4T125	1-1/4"	150lb	Black/Silver	10
WUMAG-WBR4T200	2"	150lb	Black/Silver	10
WUMAG-WBR4T400	4"	150lb	Black/Silver	10



Bridle Ring with 150lb UHD Magnet, Short Stem



WUMAG-WBR200SHORT

- Patented, low-profile design delivers strong holding power, prevents tipping
- Vertical pull force of up to 150lbs provides secure adhesion

Part #	Size	Pull Force	Color	Unit Pkg
WUMAG-WBR125SHORT	1-1/4"	150lb	Black/Silver	10
WUMAG-WBR200SHORT	2"	150lb	Black/Silver	10



Saddled Bridle Ring with 150lb UHD Magnet



WUMAG-WBR4T200SDLBK

- Saddle ensures proper bend radius for high-performance category cable & fiber
- AH-2 plenum rated for use in air handling systems

Part #	Size	Pull Force	Color	Unit Pkg
WUMAG-WBR4T200SDL	2"	150lb	Black/Yellow	10
WUMAG-WBR4T400SDL	4"	150lb	Black/Yellow	10
WUMAG-WBR200SHORTSDL	2"	150lb	Black/Yellow	10
WUMAG-WBR4T200SDLBK	2"	150lb	Black	10
WUMAG-WBR4T400SDLBK	4"	150lb	Black	10



Bridle Ring with 150lb UHD Magnet, 316 Stainless Steel



WUMAG-WBR4T200SS

- Corrosion resistant cable management solution for harsh environments
- Bridle ring crafted from premium grade 316 stainless steel

Part #	Size	Pull Force	Color	Unit Pkg
WUMAG-WBR4T125SS	1-1/4"	150Lb	Black/Silver	10
WUMAG-WBR4T200SS	2"	150Lb	Black/Silver	10
WUMAG-WBR4T400SS	4"	150Lb	Black/Silver	10



UHD Magnetic J Hooks

UHD Series delivers ultra-strong management solution for data centers, connected buildings, commercial & industrial non-continuous cable pathway applications

- Pre-assembled with 150lb UHD Mounting Magnet for organizing and routing cables along walls or ceilings
- Ultra-strong neodymium magnet, specially engineered for a secure hold on **any** ferromagnetic surface
- Delivers holding strength that surpasses conventional neodymium pot magnets
- J Hook crafted from heavy-duty pre-galvanized steel
- Vertical pull force of up to 150lbs provides secure adhesion
- Quick & easy to install without specialized tools or equipment
- Complies with NEC and TIA/EIA requirements for structured cabling systems



Magnetic J Hook, 150lb UHD Magnet, Overhead Mount, 360° Rotation



WUMAG-WJH12AC

- For ceiling and other overhead mount applications

Part #	Size	Pull Force	Color	Unit Pkg
WUMAG-WJH12AC	3/4"	150lb	Black/Silver	10
WUMAG-WJH21AC	1-5/16"	150lb	Black/Silver	10
WUMAG-WJH32AC	2"	150lb	Black/Silver	10
WUMAG-WJH64AC	4"	150lb	Black/Silver	10
WUMAG-WJH96AC	6"	100lb	Black/Silver	10



Magnetic J Hook, 150lb UHD Magnet, Wall Mount



WUMAG-WJH12

- For wall mount applications

Part #	Size	Pull Force	Color	Unit Pkg
WUMAG-WJH12	3/4"	150lb	Black/Silver	10
WUMAG-WJH21	1-5/16"	150lb	Black/Silver	10
WUMAG-WJH32	2"	150lb	Black/Silver	10
WUMAG-WJH64	4"	150lb	Black/Silver	10
WUMAG-WJH96	6"	150lb	Black/Silver	10



Magnetic Hanger, 150lb UHD Magnet



- Hang or suspend gear, tools, temporary lighting, and more
- Use in work van, tool shed, workshop, construction site, anywhere you need to hold material
- Eliminates the need to drill and install permanent hooks or anchors
- Includes 150lb-rated carabiner

Part #	Pull Force	Color	Unit Pkg
WUMAG-LINK	150Lb	Black	10





# J Hook System

**A versatile, value-driven cable support solution for data centers and commercial applications, accommodating category cable, low-voltage wire, fiber cable, control cable, and innerduct**

## ■ Fully Versatile J Hook System

20-plus interchangeable mounting configurations allows for flexible cable routing

## ■ Great Durability

Crafted from heavy-duty pre-galvanized steel

## ■ Designed for Adaptability

Bolt & locknut construction allows for easy field modification

## ■ Meets Industry Standards

Complies with industry codes and standards for structured cabling systems

## ■ Easy Identification

Offered in eight bold colors, including life safety red, to facilitate organized wire and cable pathway identification

## ■ Pre-Built, Multi-Tiered Trees

Streamline installation for multiple and parallel cable runs

## ■ Save Install Time & Labor Cost

No assembly required—every configuration is ready for installation straight from the box

## ■ UL and CUL Listed

Meets safety and reliability standards

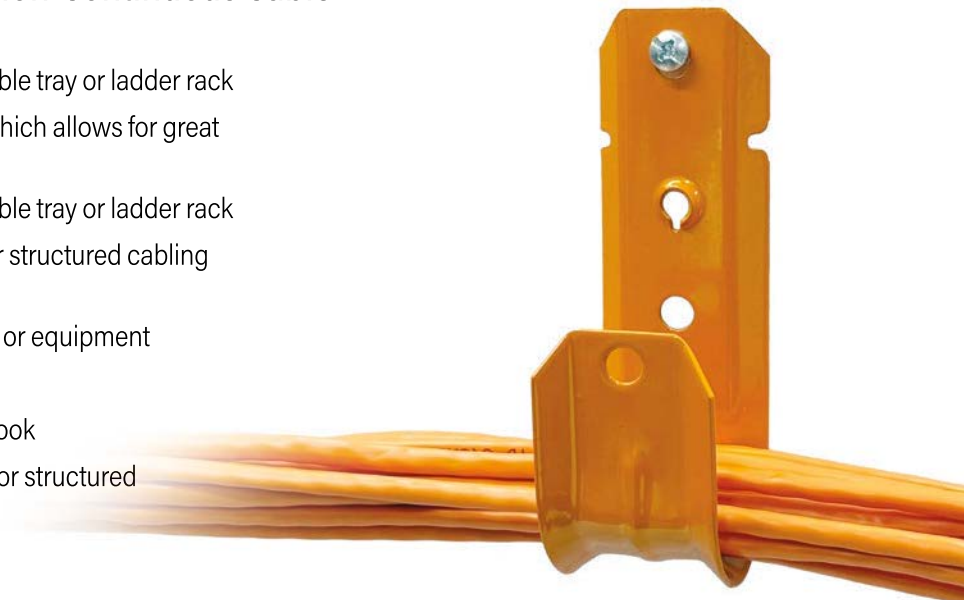


## J HOOK SYSTEM

### WJH Series J Hooks

Cable management solution for data centers, connected buildings, commercial & industrial non-continuous cable pathway applications

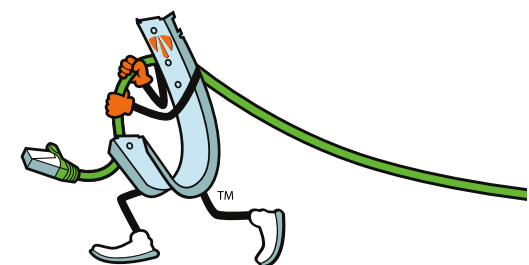
- Cost-effective alternative compared to using cable tray or ladder rack
- Crafted from heavy-duty pre-galvanized steel which allows for great durability
- Cost-effective alternative compared to using cable tray or ladder rack
- Complies with industry codes and standards for structured cabling systems
- Quick & easy to install without specialized tools or equipment
- Bendable tab for securing wire on 3/4" j hook
- Retaining clip included with 1-5/16", 2", and 4" j hook
- Complies with NEC and TIA/EIA requirements for structured cabling systems
- UL & CUL Listed



### J Hook



- Intuitively designed for multiple mounting options to organize and route cables
  - Install directly to ceiling or wall using anchor
  - Attach to numerous structural attachments using nut and bolt
- Notched to easily collapse to 90° angle allowing for ceiling mount



Part #	Size	Hole Size	Color	Cable Capacity Cat5e	Unit Pkg
WJH12	3/4"	1/4"	Silver	16	100
WJH21	1-5/16"	1/4"	Silver	53	100
WJH32	2"	1/4"	Silver	80	100
WJH64	4"	1/4"	Silver	370	100
WJH96	6"	1/4"	Silver	370	25

Cable capacity is based on 70% fill

Category cable outside diameter varies by type and manufacturer; consult with cable manufacturer to ensure proper cable outside diameter is being used for calculations

Non-continuous supports may not exceed spacing of 5ft per TIA 569-C.9.7 and EN 50174-2.



J HOOK SYSTEM

J Hook with 90° Angle Clip, 1/4" Hole



- Secures to ceiling or overhead structure with screw or mounting anchor, 1/4" threaded rod, or other structural attachment

Part #	Size	Hole Size	Color	Unit Pkg
WJH12AC	3/4"	1/4"	Silver	100
WJH21AC	1-5/16"	1/4"	Silver	100
WJH32AC	2"	1/4"	Silver	100
WJH64AC	4"	1/4"	Silver	25
WJH96AC	6"	1/4"	Silver	25

J Hook with 90° Angle Clip, 3/8" Hole



- Secures to 3/8" threaded rod
- Supports back-to-back or multi-tier installation when used with threaded rod

Part #	Size	Hole Size	Color	Unit Pkg
WJH12AC38	3/4"	3/8"	Silver	100
WJH21AC38	1-5/16"	3/8"	Silver	100
WJH32AC38	2"	3/8"	Silver	100
WJH64AC38	4"	3/8"	Silver	25
WJH96AC38	6"	3/8"	Silver	25

J Hook with 90° Angle Clip, 1/4" Hole, 3" Offset



- Secures to ceiling or overhead structure with screw or mounting anchor or 1/4" threaded rod
- Designed for avoiding obstructions or providing flexible extension from mounting surface
- Allows for more mobility of mounting beam clamp upside down

Part #	Size	Hole Size	Color	Unit Pkg
WJH12AC4T-300	3/4"	1/4"	Silver	100
WJH21AC4T-300	1-5/16"	1/4"	Silver	100
WJH32AC4T-300	2"	1/4"	Silver	100
WJH64AC4T-300	4"	1/4"	Silver	25
WJH96AC4T-300	6"	1/4"	Silver	25



J HOOK SYSTEM

We Own the Space Others Can't Reach

Effortless Installation in Compact Environments

The upside-down mounting design of the beam clamp on the j hook enables smooth, hassle-free installation in tight or hard-to-reach spaces, where conventional clamps might struggle. Its reversed orientation optimizes accessibility, reducing installation time and minimizing the need for specialized tools or adjustments. Ideal for confined industrial or commercial environments, it ensures secure fastening without compromising holding power.



J Hook with Spring Steel Beam Clamp

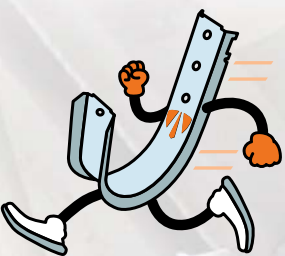


- Screws to beam flange up to 1/2" thick
- Serrated jaws deliver additional gripping power
- Available upside-down mounted beam clamp for effortless installation in tight spaces

Part #	Size	Flange Thickness	Color	Unit Pkg
WJH12SSBC	3/4"	up to 1/2"	Black/Silver	100
WJH21SSBC	1-5/16"	up to 1/2"	Black/Silver	100
WJH32SSBC	2"	up to 1/2"	Black/Silver	100
WJH64SSBC	4"	up to 1/2"	Black/Silver	25
WJH96SSBC	6"	up to 1/2"	Black/Silver	25
WJH12SSBCU	3/4"	up to 1/2"; upside down mount	Black/Silver	100
WJH21SSBCU	1-5/16"	up to 1/2"; upside down mount	Black/Silver	100
WJH32SSBCU	2"	up to 1/2"; upside down mount	Black/Silver	100
WJH64SSBCU	4"	up to 1/2"; upside down mount	Black/Silver	25
WJH96SSBCU	6"	up to 1/2"; upside down mount	Black/Silver	25



At Winnie Industries, we understand that not all projects can be fulfilled with off-the-shelf products.



QUICK BUILD  
CUSTOM CONFIGURATIONS FAST

**Quick Build by Winnie Industries** offers fast, expert-crafted custom solutions with no minimums and one-week shipping. Whether you need a complex, double-sided color-coded j hook tree or a simple painted bridle ring, we deliver ready-to-install configurations tailored to your needs—without long lead times or large commitments.

Let our team guide you to the right fit from our nearly unlimited options.



J Hook with Spring Steel Beam Clamp, Rotatable



- Screws to beam flange up to 1/2" thick
- Serrated jaws deliver additional gripping power
- 360-degrees of rotation provides access to j hook in any direction
- Available upside-down mounted beam clamp for effortless installation in tight spaces (limited rotation)

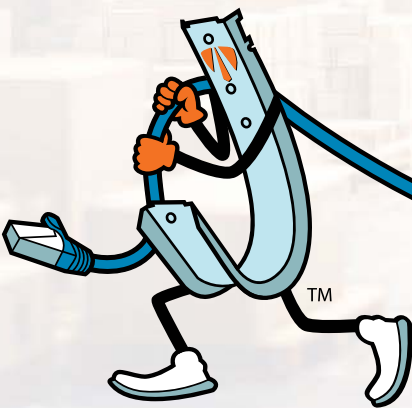
Part #	Size	Flange Thickness	Color	Unit Pkg
WJH12ACSSBC	3/4"	up to 1/2"	Black/Silver	100
WJH21ACSSBC	1-5/16"	up to 1/2"	Black/Silver	100
WJH32ACSSBC	2"	up to 1/2"	Black/Silver	100
WJH64ACSSBC	4"	up to 1/2"	Black/Silver	25
WJH96ACSSBC	6"	up to 1/2"	Black/Silver	25
WJH12ACSSBCU	3/4"	up to 1/2"; upside down mount	Black/Silver	100
WJH21ACSSBCU	1-5/16"	up to 1/2"; upside down mount	Black/Silver	100
WJH32ACSSBCU	2"	up to 1/2"; upside down mount	Black/Silver	100
WJH64ACSSBCU	4"	up to 1/2"; upside down mount	Black/Silver	25
WJH96ACSSBCU	6"	up to 1/2"; upside down mount	Black/Silver	25



Beyond the J Hook - Efficiency, Expertise, and Seamless Installs

Whether it's precise kitting, specialized packaging, or custom configurations, we fine-tune every detail to match your project's unique needs. From large-scale construction projects to store rollouts, our value-added services ensure installations are efficient, reliable, and professionally executed. Working closely with your distribution partner, we provide precisely what's needed, when it's needed, supporting your project with tailored solutions that maximize productivity and keep costs in check. Whether managing phased installations or large-scale deployments, our expertise guarantees a streamlined, seamless process from start to finish.

- Kitting
- Specialized Packaging
- Tailored Configurations
- Logistics & Distribution Support
- Inventory Management & Just-in-Time Delivery



J Hook with Pressed Beam Clamp



- Screws to beam flange up to 1/2" thick
- Serrated jaws deliver additional gripping power

Part #	Size	Flange Thickness	Color	Unit Pkg
WJH12PBC	3/4"	up to 1/2"	Silver	100
WJH21PBC	1-5/16"	up to 1/2"	Silver	100
WJH32PBC	2"	up to 1/2"	Silver	100
WJH64PBC	4"	up to 1/2"	Silver	25
WJH96PBC	6"	up to 1/2"	Silver	25

J Hook with Pressed Beam Clamp



- Screws to beam flange up to 1/2" thick
- Serrated jaws deliver additional gripping power
- 360-degrees of rotation provides access to j hook in any direction

Part #	Size	Flange Thickness	Color	Unit Pkg
WJH12ACPBC	3/4"	up to 1/2"	Silver	100
WJH21ACPBC	1-5/16"	up to 1/2"	Silver	100
WJH32ACPBC	2"	up to 1/2"	Silver	100
WJH64ACPBC	4"	up to 1/2"	Silver	25
WJH96ACPBC	6"	up to 1/2"	Silver	25



Magnetic J Hooks:  
Mount Smarter, Faster

See pages 14-15, 17  
No screws. No anchors. No hassle.



Double J Hook with Pressed Beam Clamp, Rotatable



WJH21ACPBC2

- Screws to beam flange up to 1/2" thick
- Back-to-back j hook installation
- Creates a parallel distribution pathway
- Serrated jaws deliver additional gripping power
- 360-degrees of rotation provides access to j hook in any direction

Part #	Size	Flange Thickness	Color	Unit Pkg
WJH12ACPBC2	3/4"	up to 1/2"	Silver	50
WJH21ACPBC2	1-5/16"	up to 1/2"	Silver	50
WJH32ACPBC2	2"	up to 1/2"	Silver	50
WJH64ACPBC2	4"	up to 1/2"	Silver	12
WJH96ACPBC2	6"	up to 1/2"	Silver	12



J Hook with Malleable Beam Clamp



WJH12MBC4T

WJH32MBC4T

- Screws to beam flange up to 3/4" thick

Part #	Size	Flange Thickness	Color	Unit Pkg
WJH12MBC4T	3/4"	up to 3/4"	Silver	25
WJH21MBC4T	1-5/16"	up to 3/4"	Silver	25
WJH32MBC4T	2"	up to 3/4"	Silver	25
WJH64MBC4T	4"	up to 3/4"	Silver	25
WJH96MBC4T	6"	up to 3/4"	Silver	25

No Assembly Required

Every configuration arrives installation-ready—no loose parts, no extra prep, no delays. Winnie Industries' solutions streamline setup, reduce labor costs, and eliminate time spent on-site. Preconfigured for fast, reliable deployment across a wide range of install scenarios, so crews stay focused on the job—not the prep.



J Hook with Hammer on Beam Clamp



WJH12HOK-24

WJH32HOK-58

- Secures to beam flange up to 1/2" thick

Part #	Size	Flange Thickness	Color	Unit Pkg
WJH12HOK-24	3/4"	1/8"-1/4"	Black/Silver	100
WJH21HOK-24	1-5/16"	1/8"-1/4"	Black/Silver	100
WJH32HOK-24	2"	1/8"-1/4"	Black/Silver	100
WJH64HOK-24	4"	1/8"-1/4"	Black/Silver	25
WJH96HOK-24	6"	1/8"-1/4"	Black/Silver	25
WJH12HOK-58	3/4"	5/16"-1/2"	Black/Silver	100
WJH21HOK-58	1-5/16"	5/16"-1/2"	Black/Silver	100
WJH32HOK-58	2"	5/16"-1/2"	Black/Silver	100
WJH64HOK-58	4"	5/16"-1/2"	Black/Silver	25
WJH96HOK-58	6"	5/16"-1/2"	Black/Silver	25

J Hook Rolling Clip



WJH125ROLL



WJH32 with Rolling Clip installed

- Reduces strain and safeguards cable integrity by minimizing pulling tension during installation
- Enables faster installs while adhering to industry best practices
- Compatible with WJH Series 1-5/16" and larger j hooks

Part #	Size	Color	Unit Pkg
WJH125ROLL	1-5/16"	Silver	10
WJH200ROLL	2"	Silver	10
WJH400ROLL	4"	Silver	25

The Rolling J Hook Retaining Clip is designed to pivot slightly, allowing it to adapt to dynamic cable movement and elevation changes without compromising support. This flexibility helps maintain cable integrity and streamlines installation by preventing slippage or bounce during pulls.



J HOOK SYSTEM

J Hook with Hammer on Beam Clamp, Rotatable



- Secures to beam flange up to 3/4" thick
- Angle clip remains fixed, preventing the j hook from twisting sideways when cable is pulled
- 360-degrees of rotation provides access to j hook in any direction

Part #	Size	Flange Thickness	Color	Unit Pkg
WJH12ACM24	3/4"	1/8"-1/4"	Black/Silver	100
WJH21ACM24	1-5/16"	1/8"-1/4"	Black/Silver	100
WJH32ACM24	2"	1/8"-1/4"	Black/Silver	100
WJH64ACM24	4"	1/8"-1/4"	Black/Silver	25
WJH96ACM24	6"	1/8"-1/4"	Black/Silver	25
WJH12ACM58	3/4"	5/16"-1/2"	Black/Silver	100
WJH21ACM58	1-5/16"	5/16"-1/2"	Black/Silver	100
WJH32ACM58	2"	5/16"-1/2"	Black/Silver	100
WJH64ACM58	4"	5/16"-1/2"	Black/Silver	25
WJH96ACM58	6"	5/16"-1/2"	Black/Silver	25
WJH12ACM912	3/4"	9/16"-3/4"	Black/Silver	100
WJH21ACM912	1-5/16"	9/16"-3/4"	Black/Silver	100
WJH32ACM912	2"	9/16"-3/4"	Black/Silver	100
WJH64ACM912	4"	9/16"-3/4"	Black/Silver	25
WJH96ACM912	6"	9/16"-3/4"	Black/Silver	25



J Hook Retaining Clip



- Crafted from pre-galvanized steel for long-term durability
- Inserts into the open side of a j hook to keep cables from spilling out or shifting
- Help maintain proper bend radius by holding cables in place
- Snaps in without tools making them ideal for fast deployment and repositioning
- Compatible with all WJH Series 1-5/16", 2", and 4" J Hooks

Part #	Size	Color	Unit Pkg
WJH125RTAN	1-5/16"	Silver	100
WJH200RTAN	2"	Silver	100
WJH400RTAN	4"	Silver	25



J HOOK SYSTEM

J Hook with Z Purlin Angled Hammer on Clamp



- Secures to angled steel flange 1/16" to 1/4" thick
- Designed to grip the angled flange of Z-shaped steel purlins
- Hammer on install—just a quick strike to lock onto the flange

Part #	Size	Flange Thickness	Color	Unit Pkg
WJH12AF14	3/4"	1/16" to 1/4"	Black/Silver	100
WJH21AF14	1-5/16"	1/16" to 1/4"	Black/Silver	100
WJH32AF14	2"	1/16" to 1/4"	Black/Silver	100
WJH64AF14	4"	1/16" to 1/4"	Black/Silver	25
WJH96AF14	6"	1/16" to 1/4"	Black/Silver	25

J Hook with Z Purlin Angled Hammer on Clamp, Rotatable



- Secures to beam flange 0.06" to 0.10" thick
- 360-degrees of rotation provides access to j hook in any direction

Part #	Size	Flange Thickness	Color	Unit Pkg
WJH12AC123	3/4"	0.06" to 0.10"	Black/Silver	100
WJH21AC123	1-5/16"	0.06" to 0.10"	Black/Silver	100
WJH32AC123	2"	0.06" to 0.10"	Black/Silver	100
WJH64AC123	4"	0.06" to 0.10"	Black/Silver	25
WJH96AC123	6"	0.06" to 0.10"	Black/Silver	25



The WJH Series delivers where it matters—from data centers to connected buildings—with hardware that installs fast, holds strong, and keeps projects on track

J Hook with Multi-Functional Clip



- Secures to 12-gauge wire (pencil rod) or threaded rod up to 3/8"

Part #	Size	Rod Size	Wire Size	Color	Unit Pkg
WJH12W	3/4"	1/4", 3/8"	#12-#8	Black/Silver	100
WJH21W	1-5/16"	1/4", 3/8"	#12-#8	Black/Silver	100
WJH32W	2"	1/4", 3/8"	#12-#8	Black/Silver	100
WJH64W	4"	1/4", 3/8"	#12-#8	Black/Silver	25
WJH96W	6"	1/4", 3/8"	#12-#8	Black/Silver	25

- Secures to 1/2" or 5/8" threaded rod

Part #	Size	Rod Size	Color	Unit Pkg
WJH12W8Z	3/4"	1/2", 5/8"	Silver	100
WJH21W8Z	1-5/16"	1/2", 5/8"	Silver	100
WJH32W8Z	2"	1/2", 5/8"	Silver	100
WJH64W8Z	4"	1/2", 5/8"	Silver	25
WJH96W8Z	6"	1/2", 5/8"	Silver	25

J Hook with Powder Actuated Shot



- Secures to concrete, masonry, steel, or composite metal decking using powder actuated or single-shot gas gun
- 1-1/4 .300 head powder actuated drive pin
- Compatible with Ramset, Hilti, and Powers nail guns

Part #	Size	Mount	Color	Unit Pkg
WJH12ACPA	3/4"	Concrete, masonry, steel	Silver/Black	100
WJH21ACPA	1-5/16"	Concrete, masonry, steel	Silver/Black	100
WJH32ACPA	2"	Concrete, masonry, steel	Silver/Black	100
WJH64ACPA	4"	Concrete, masonry, steel	Silver/Black	25
WJH96ACPA	6"	Concrete, masonry, steel	Silver/Black	25

J Hook with Pedestal Mount



- Secures to underfloor pedestal up to 1"
- Organize and route cables in raised floor environments

Part #	Size	Pedestal Diameter	Color	Unit Pkg
WJH12CC075	3/4"	3/4"	Silver	100
WJH21CC075	1-5/16"	3/4"	Silver	100
WJH32CC075	2"	3/4"	Silver	100
WJH64CC075	4"	3/4"	Silver	25
WJH96CC075	6"	3/4"	Silver	25
WJH12CC100	3/4"	1"	Silver	100
WJH21CC100	1-5/16"	1"	Silver	100
WJH32CC100	2"	1"	Silver	100
WJH64CC100	4"	1"	Silver	25
WJH96CC100	6"	1"	Silver	25

Reliably supports the cabling infrastructure that delivers 24/7 connectivity for network, communications, fire safety, monitoring, and control



Stay informed and empowered with our online resources—a one-stop destination for valuable literature, training materials, comprehensive FAQs, and dedicated support. Whether you're looking to expand your knowledge, enhance your skills, or find quick solutions, our online hub provides everything you need to stay ahead.





# Painted J Hook System

A quality, comprehensive but yet value-driven color-coded solution for cable support in data centers, smart buildings, and industrial installs

## ■ Fully Versatile J Hook System

20-plus interchangeable mounting configurations allows for flexible cable routing

## ■ Easy Identification

Offered in eight bold colors, including life safety red, to facilitate organized wire and cable pathway identification

## ■ Engineered to Disappear

BlackOUT & WhiteOUT series blends into surroundings

## ■ Great Durability

Crafted from heavy-duty pre-galvanized steel

## ■ Designed for Adaptability

Bolt & locknut construction allows for easy field modification

## ■ Meets Industry Standards

Complies with industry codes and standards for structured cabling systems

## ■ Pre-Built, Multi-Tiered Trees

Streamline installation for multiple and parallel cable runs

## ■ Save Install Time & Labor Cost

No assembly required—every configuration is ready for installation straight from the box

## ■ UL and CUL Listed

Meets safety and reliability standards



## J HOOK SYSTEM

### WJH Series Painted J Hooks



Color-coded cable management solution for data centers, connected buildings, commercial, & industrial non-continuous cable pathway applications

- Cost-effective alternative compared to using cable tray or ladder rack
- Crafted from heavy-duty pre-galvanized steel which allows for great durability
- Eight bold colors perfect for color-coding wire and cable pathways that maintain a polished, professional appearance
- Complies with industry codes and standards for structured cabling systems
- Quick & easy to install without specialized tools or equipment
- Bendable tab for securing wire on 3/4" j hook
- Retaining clip included with 1-5/16", 2", and 4" j hook
- UL & CUL Listed

### Painted J Hook

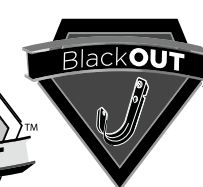
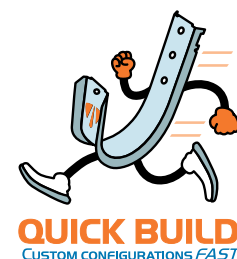


WJH32BK

WJH32WH

- Intuitively designed for multiple mounting options to organize and route cables
  - Install directly to ceiling or wall using anchor
  - Attach to numerous structural attachments using nut and bolt
- Notched to easily collapse to 90° angle allowing for ceiling mount
- Sleek black or modern white j hooks disappear into the background aesthetically matching its surroundings

Part #	Size	Hole Size	Color	Cable Capacity Cat5e	Unit Pkg
WJH12BK	3/4"	1/4"	Black	16	100
WJH21BK	1-5/16"	1/4"	Black	53	100
WJH32BK	2"	1/4"	Black	80	100
WJH64BK	4"	1/4"	Black	370	25
WJH12WH	3/4"	1/4"	White	16	100
WJH21WH	1-5/16"	1/4"	White	53	100
WJH32WH	2"	1/4"	White	80	100
WJH64WH	4"	1/4"	White	370	25



Painted J Hook



- Intuitively designed for multiple mounting options to organize and route cables
  - Install directly to ceiling or wall using anchor
  - Attach to numerous structural attachments using nut and bolt
- Notched to easily collapse to 90° angle allowing for ceiling mount
- Bold colors allow for segmenting and quick identification of cabling infrastructure

Part #	Size	Hole Size	Color	Unit Pkg
WJH12BU	3/4"	1/4"	Blue	100
WJH21BU	1-5/16"	1/4"	Blue	100
WJH32BU	2"	1/4"	Blue	100
WJH64BU	4"	1/4"	Blue	25
WJH12GR	3/4"	1/4"	Green	100
WJH21GR	1-5/16"	1/4"	Green	100
WJH32GR	2"	1/4"	Green	100
WJH64GR	4"	1/4"	Green	25
WJH12OR	3/4"	1/4"	Orange	100
WJH21OR	1-5/16"	1/4"	Orange	100
WJH32OR	2"	1/4"	Orange	100
WJH64OR	4"	1/4"	Orange	25
WJH12PU	3/4"	1/4"	Purple	100
WJH21PU	1-5/16"	1/4"	Purple	100
WJH32PU	2"	1/4"	Purple	100
WJH64PU	4"	1/4"	Purple	25
WJH12RD	3/4"	1/4"	Red	100
WJH21RD	1-5/16"	1/4"	Red	100
WJH32RD	2"	1/4"	Red	100
WJH64RD	4"	1/4"	Red	25
WJH12YL	3/4"	1/4"	Yellow	100
WJH21YL	1-5/16"	1/4"	Yellow	100
WJH32YL	2"	1/4"	Yellow	100
WJH64YL	4"	1/4"	Yellow	25

Durable painted finish ensures clear pathway identification without unreliable clips or labels, fully configurable to your mounting specifications



**BlackOUT™** Series is a sleek, all-black cable management solution designed to vanish into black ceiling environments — no paint, no distractions, just seamless support

J Hook with 90° Angle Clip, 1/4" Hole, All Black



- Secures to ceiling or overhead structure with mounting anchor, 1/4" threaded rod, or other structural attachment

Part #	Size	Hole Size	Color	Unit Pkg
WJH12ACAB	3/4"	1/4"	Black	100
WJH21ACAB	1-5/16"	1/4"	Black	100
WJH32ACAB	2"	1/4"	Black	100
WJH64ACAB	4"	1/4"	Black	25

J Hook with Spring Steel Beam Clamp, All Black



- Screws to beam flange up to 1/2" thick
- Serrated jaws deliver additional gripping power

Part #	Size	Flange Thickness	Color	Unit Pkg
WJH12SSBCAB	3/4"	up to 1/2"	Black	100
WJH21SSBCAB	1-5/16"	up to 1/2"	Black	100
WJH32SSBCAB	2"	up to 1/2"	Black	100
WJH64SSBCAB	4"	up to 1/2"	Black	25

J Hook with Spring Steel Beam Clamp, Rotatable, All Black



- Screws to beam flange up to 1/2" thick
- Serrated jaws deliver additional gripping power
- 360-degrees of rotation provides access to j hook in any direction

Part #	Size	Flange Thickness	Color	Unit Pkg
WJH12ACSSBCAB	3/4"	up to 1/2"	Black	100
WJH21ACSSBCAB	1-5/16"	up to 1/2"	Black	100
WJH32ACSSBCAB	2"	up to 1/2"	Black	100
WJH64ACSSBCAB	4"	up to 1/2"	Black	25

The **BlackOUT Series** doesn't just come in black—it embraces a design ethos that's unapologetically bold, purposefully stealthy, and unmistakably professional



J HOOK SYSTEM

J Hook with Pressed Beam Clamp, All Black



WJH32PBCAB

- Screws to beam flange up to 1/2" thick
- Serrated jaws deliver additional gripping power

Part #	Size	Flange Thickness	Color	Unit Pkg
WJH12PBCAB	3/4"	1/2"	Black	100
WJH21PBCAB	1-5/16"	1/2"	Black	100
WJH32PBCAB	2"	1/2"	Black	100
WJH64PBCAB	4"	1/2"	Black	25

J Hook with Pressed Beam Clamp, Rotable, All Black



WJH32ACPBCAB

- Screws to beam flange up to 1/2" thick
- Serrated jaws deliver additional gripping power
- 360-degrees of rotation provides access to j hook in any direction

Part #	Size	Flange Thickness	Color	Unit Pkg
WJH12ACPBCAB	3/4"	1/2"	Black	100
WJH21ACPBCAB	1-5/16"	1/2"	Black	100
WJH32ACPBCAB	2"	1/2"	Black	100
WJH64ACPBCAB	4"	1/2"	Black	25

J Hook with Z Purlin Angled Hammer on Clamp, All Black

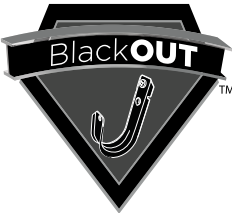


WJH32AF14AB

- Secures to angled steel flange 1/16" to 1/4" thick
- Designed to grip the angled flange of Z-shaped steel purlins
- Hammer on install, just a quick strike to lock onto the flange

Part #	Size	Flange Thickness	Color	Unit Pkg
WJH12AF14AB	3/4"	1/16" to 1/4"	Black	100
WJH21AF14AB	1-5/16"	1/16" to 1/4"	Black	100
WJH32AF14AB	2"	1/16" to 1/4"	Black	100
WJH64AF14AB	4"	1/16" to 1/4"	Black	25

The sleek, all-black finish isn't just for aesthetics—it's a purposeful design choice that minimizes visual clutter in open-ceiling spaces, allowing BlackOUT hardware to vanish into black ceilings and let clean lines and architectural intent take center stage



J HOOK SYSTEM

J Hook with Hammer on Beam Clamp, All Black



WJH32HOK-58AB

- Secures to beam flange up to 1/2" thick

Part #	Size	Flange Thickness	Color	Unit Pkg
WJH12HOK-24AB	3/4"	1/8"-1/4"	Black	100
WJH21HOK-24AB	1-5/16"	1/8"-1/4"	Black	100
WJH32HOK-24AB	2"	1/8"-1/4"	Black	100
WJH64HOK-24AB	4"	1/8"-1/4"	Black	25
WJH12HOK-58AB	3/4"	5/16"-1/2"	Black	100
WJH21HOK-58AB	1-5/16"	5/16"-1/2"	Black	100
WJH32HOK-58AB	2"	5/16"-1/2"	Black	100
WJH64HOK-58AB	4"	5/16"-1/2"	Black	25

J Hook with Hammer on Beam Clamp, Rotatable, All Black



WJH32ACM58AB

- Secures to beam flange up to 3/4" thick
- Angle clip remains fixed, preventing the j hook from twisting sideways when cable is pulled
- 360-degrees of rotation provides access to j hook in any direction

Part #	Size	Flange Thickness	Color	Unit Pkg
WJH12ACM24AB	3/4"	1/8"-1/4" Flange	Black	100
WJH21ACM24AB	1-5/16"	1/8"-1/4" Flange	Black	100
WJH32ACM24AB	2'	1/8"-1/4" Flange	Black	100
WJH64ACM24AB	4"	1/8"-1/4" Flange	Black	25
WJH12ACM58AB	3/4"	5/16"-1/2" Flange	Black	100
WJH21ACM58AB	1-5/16"	5/16"-1/2" Flange	Black	100
WJH32ACM58AB	2'	5/16"-1/2" Flange	Black	100
WJH64ACM58AB	4"	5/16"-1/2" Flange	Black	25

J Hook with Multi-Functional Clip, All Black



WJH32WAB

- Secures to 12-gauge wire (pencil rod) or threaded rod up to 3/8"

Part #	Size	Rod Size	Wire Size	Color	Unit Pkg
WJH12WAB	3/4"	1/4", 3/8"	#12-#8	Black	100
WJH21WAB	1-5/16"	1/4", 3/8"	#12-#8	Black	100
WJH32WAB	2"	1/4", 3/8"	#12-#8	Black	100
WJH64WAB	4"	1/4", 3/8"	#12-#8	Black	25



J HOOK SYSTEM

**WhiteOUT** Series is a modern, all-white cable management solution designed to vanish into white ceiling environments — no paint, no distractions, just seamless support



J Hook with 90° Angle Clip, 1/4" Hole, All White



- Secures to ceiling or overhead structure with mounting anchor, 1/4" threaded rod, or other structural attachment

Part #	Size	Hole Size	Color	Unit Pkg
WJH12ACAW	3/4"	1/4"	White	100
WJH21ACAW	1-5/16"	1/4"	White	100
WJH32ACAW	2"	1/4"	White	100
WJH64ACAW	4"	1/4"	White	25

J Hook with Spring Steel Beam Clamp, All White



- Screws to beam flange up to 1/2" thick
- Serrated jaws deliver additional gripping power

Part #	Size	Flange Thickness	Color	Unit Pkg
WJH12SSBCAW	3/4"	up to 1/2"	White	100
WJH21SSBCAW	1-5/16"	up to 1/2"	White	100
WJH32SSBCAW	2"	up to 1/2"	White	100
WJH64SSBCAW	4"	up to 1/2"	White	25

J Hook with Spring Steel Beam Clamp, Rotatable, All White



- Screws to beam flange up to 1/2" thick
- Serrated jaws deliver additional gripping power
- 360-degrees of rotation provides access to j hook in any direction

Part #	Size	Flange Thickness	Color	Unit Pkg
WJH12ACSSBCAW	3/4"	up to 1/2"	White	100
WJH21ACSSBCAW	1-5/16"	up to 1/2"	White	100
WJH32ACSSBCAW	2"	up to 1/2"	White	100
WJH64ACSSBCAW	4"	up to 1/2"	White	25

The modern, all-white finish isn't just for aesthetics—it's a purposeful design choice that minimizes visual clutter in open-ceiling spaces, allowing **WhiteOUT** hardware to vanish into white ceilings and let clean lines and architectural intent take center stage



J HOOK SYSTEM

J Hook with Pressed Beam Clamp, All White



- Screws to beam flange up to 1/2" thick

Part #	Size	Flange Thickness	Color	Unit Pkg
WJH12PBCAW	3/4"	up to 1/2"	White	100
WJH21PBCAW	1-5/16"	up to 1/2"	White	100
WJH32PBCAW	2"	up to 1/2"	White	100
WJH64PBCAW	4"	up to 1/2"	White	25

J Hook with Pressed Beam Clamp, Rotable, All White



- Screws to beam flange up to 1/2" thick
- 360-degrees of rotation provides access to j hook in any direction

Part #	Size	Flange Thickness	Color	Unit Pkg
WJH12ACPBCAW	3/4"	up to 1/2"	White	100
WJH21ACPBCAW	1-5/16"	up to 1/2"	White	100
WJH32ACPBCAW	2"	up to 1/2"	White	100
WJH64ACPBCAW	4"	up to 1/2"	White	25

J Hook with Hammer on Beam Clamp, Rotatable, All White



- Secures to beam flange up to 3/4" thick
- Angle clip remains fixed, preventing the j hook from twisting sideways when cable is pulled
- 360-degrees of rotation provides access to j hook in any direction

Part #	Size	Flange Thickness	Color	Unit Pkg
WJH12ACM24AW	3/4"	1/8"-1/4"	White	100
WJH21ACM24AW	1-5/16"	1/8"-1/4"	White	100
WJH32ACM24AW	2"	1/8"-1/4"	White	100
WJH64ACM24AW	4"	1/8"-1/4"	White	25
WJH12ACM58AW	3/4"	5/16"-1/2"	White	100
WJH21ACM58AW	1-5/16"	5/16"-1/2"	White	100
WJH32ACM58AW	2"	5/16"-1/2"	White	100
WJH64ACM58AW	4"	5/16"-1/2"	White	25

J Hook with Multi-Functional Clip, All White



- Secures to 12-gauge wire (pencil rod) or threaded rod up to 3/8"

Part #	Size	Rod Size	Wire Size	Color	Unit Pkg
WJH12WAW	3/4"	1/4", 3/8"	#12-#8	White	100
WJH21WAW	1-5/16"	1/4", 3/8"	#12-#8	White	100
WJH32WAW	2"	1/4", 3/8"	#12-#8	White	100
WJH64WAW	4"	1/4", 3/8"	#12-#8	White	25



WJH Series J Hook Trees

The WJH Series™ J Hook Trees deliver a durable, cost-effective solution for organizing parallel cable runs with clearly defined pathways—ideal for data centers, smart buildings, and industrial environments—with near-limitless configurations



Single-Sided J Hook Tree



- Secures to ceiling or overhead structure with mounting anchor, 1/4" threaded rod, or other structural attachment

Part #	Size	# of J Hooks	Tiers	Mount	Unit Pkg
WJHT-2JH21SD	1-5/16"	2	2-Tier	Ceiling or Attachment	1
WJHT-2JH32SD	2"	2	2-Tier	Ceiling or Attachment	1
WJHT-2JH64SD	4"	2	2-Tier	Ceiling or Attachment	1
WJHT-2JH96SD	6"	2	2-Tier	Ceiling or Attachment	1
WJHT-3JH21SD	1-5/16"	3	3-Tier	Ceiling or Attachment	1
WJHT-3JH32SD	2"	3	3-Tier	Ceiling or Attachment	1
WJHT-3JH64SD	4"	3	3-Tier	Ceiling or Attachment	1
WJHT-3JH96SD	6"	3	3-Tier	Ceiling or Attachment	1
WJHT-4JH21SD	1-5/16"	4	4-Tier	Ceiling or Attachment	1
WJHT-4JH32SD	2"	4	4-Tier	Ceiling or Attachment	1
WJHT-4JH64SD	4"	4	4-Tier	Ceiling or Attachment	1
WJHT-4JH96SD	6"	4	4-Tier	Ceiling or Attachment	1

We Create Project-Specific Solutions



J Hook Trees Designed for Your Project



Double-Sided J Hook Tree



- Secures to ceiling or overhead structure with mounting anchor, 1/4" threaded rod, or other structural attachment

Part #	Size	# of J Hooks	Tiers	Mount	Unit Pkg
WJHT-2JH21DBL	1-5/16"	2	1-Tier	Ceiling or Attachment	1
WJHT-2JH32DBL	2"	2	1-Tier	Ceiling or Attachment	1
WJHT-2JH64DBL	4"	2	1-Tier	Ceiling or Attachment	1
WJHT-2JH96DBL	6"	2	1-Tier	Ceiling or Attachment	1
WJHT-4JH21DBL	1-5/16"	4	2-Tier	Ceiling or Attachment	1
WJHT-4JH32DBL	2"	4	2-Tier	Ceiling or Attachment	1
WJHT-4JH64DBL	4"	4	2-Tier	Ceiling or Attachment	1
WJHT-4JH96DBL	6"	4	2-Tier	Ceiling or Attachment	1
WJHT-6JH21DBL	1-5/16"	6	3-Tier	Ceiling or Attachment	1
WJHT-6JH32DBL	2"	6	3-Tier	Ceiling or Attachment	1
WJHT-6JH64DBL	4"	6	3-Tier	Ceiling or Attachment	1
WJHT-6JH96DBL	6"	6	3-Tier	Ceiling or Attachment	1

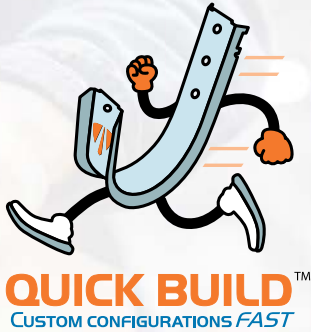
Ask about wall mount j hook trees

Accelerate your project with the speed of Quick Build

We understand that not all projects can be fulfilled with off-the-shelf products.

Winnie Industries' Quick Build service delivers fast, expert custom solutions with no minimums, long lead times, or excess inventory. From double-sided, color-coded j hook trees to ready-to-install bridle ring configurations, our specialists provide high-quality, field-ready solutions—built to spec and shipped within a week.

Let our team guide you to the right fit from our nearly unlimited options.





# Bridle Ring System

The WBR Series Bridle Ring System provides a quality, comprehensive but yet value-driven, non-continuous support solution for commercial, industrial, and residential cable pathway applications

- Fully Versatile Bridle Ring System**  
10-plus interchangeable mounting configurations allows for flexible cable routing
- Great Durability**  
Crafted from heavy-duty pre-galvanized steel
- Quick Cable Access**  
Features an open loop design for smooth and efficient installs
- Designed for Adaptability**  
Vertical or horizontal installation on various surfaces
- Meets Industry Standards**  
Complies with industry codes and standards for structured cabling and life safety systems
- Easy Identification**  
Offered in five distinct colors, including life safety red, to facilitate organized wire and cable pathway identification
- Save Install Time & Labor Cost**  
No assembly required—every configuration is ready for installation straight from the box
- UL and CUL Listed**  
Meets safety and reliability standards

## BRIDLE RINGS

### WBR Series Bridle Rings

Fast and cost-effective alternative cable management solution for voice, data, low-voltage, or video cabling pathway applications

- Crafted from heavy-duty, zinc plated steel which allows for great durability & corrosion resistance
- Creates a distribution pathway for category cable, PoE, fire alarm cable, low-voltage cable, fiber cable, signal, and control cable
- Load capacity to 17lbs
- Suitable for use in air handling systems (plenums) in accordance with Section 300.22 (C) and (D) of the National Electric Code



#### Bridle Ring with 1/4-20 Thread



WBR4T125

- Fastens to 1/4-20 threaded structural attachments, clamps or anchors for installation to steel beams, threaded rod or concrete, masonry, or metal surfaces
- Can secure to strut using spring nuts
- Use for horizontal or vertical cable runs

Part #	Size	Stem Length	Mount	Color	Unit Pkg
WBR4T125	1-1/4"	1.5"	Ceiling, wall, or attachment	Silver	100
WBR4T200	2"	1.5"	Ceiling, wall, or attachment	Silver	100
WBR4T400	4"	1.5"	Ceiling, wall, or attachment	Silver	100
WBR125LONG	1-1/4"	3"	Ceiling, wall, or attachment	Silver	100
WBR200LONG	2"	3"	Ceiling, wall, or attachment	Silver	100
WBR125SHORT	1-1/4"	0.50"	Ceiling, wall, or attachment	Silver	100
WBR200SHORT	2"	0.50"	Ceiling, wall, or attachment	Silver	100

#### Bridle Ring with Wood Screw Thread



WBR125WS

- Drives directly into wooden beams, ceiling joists, backboards, and studs
- Perfect for retrofitting historic wooden structures to meet modern standards
- Use for horizontal or vertical cable runs

Part #	Size	Stem Length	Mount	Color	Unit Pkg
WBR125WS	1-1/4"	1.5"	Ceiling or wall	Silver	100
WBR200WS	2"	1.5"	Ceiling or wall	Silver	100



BRIDLE RINGS

Bridle Ring with 90° Angle Clip



WBR200AC

- Fastens to ceiling or wall with mounting anchor
- Use for horizontal or vertical cable runs

Part #	Size	Hole Size	Color	Unit Pkg
WBR125AC	1-1/4"	1/4"	Silver	100
WBR200AC	2"	1/4"	Silver	100
WBR400AC	4"	1/4"	Silver	100

Bridle Ring with Powder Actuated Pin



WBR200ACT

- Secures bridle ring to concrete, masonry, steel, or composite metal decking using powder actuated or single-shot gas gun
- Compatible with Ramset, Hilti, and Powers brand nail guns
- Use for horizontal or vertical cable runs

Part #	Size	Mounting	Color	Unit Pkg
WBR125ACT	1-1/4"	Concrete, masonry, or steel	Silver	100
WBR200ACT	2"	Concrete, masonry, or steel	Silver	100
WBR400ACT	4"	Concrete, masonry, or steel	Silver	100

Bridle Ring with Multi-Functional Clip



WBR125BW34

- Fastens to 12-gauge wire (pencil rod) or threaded rod up to 3/8"
- Nut and lock washer come pre-attached for secure and reliable fastening to the attachment

Part #	Size	Rod Size	Wire Size	Color	Unit Pkg
WBR125BW34	1-1/4"	1/4", 3/8"	#12-#8	Black/Silver	100
WBR200BW34	2"	1/4", 3/8"	#12-#8	Black/Silver	100
WBR400BW34	4"	1/4", 3/8"	#12-#8	Black/Silver	100

Bridle Ring with Hammer on Beam Clamp



WBR125M24BT

- Secures to beam flange up to 1/2" thick
- Nut and lock washer come pre-attached for secure and reliable fastening to the attachment

Part #	Size	Flange Thickness	Color	Unit Pkg
WBR125M24BT	1-1/4"	1/8"-1/4"	Black/Silver	100
WBR200M24BT	2"	1/8"-1/4"	Black/Silver	100
WBR400M24BT	4"	1/8"-1/4"	Black/Silver	100
WBR125M58BT	1-1/4"	5/16"-1/2"	Black/Silver	100
WBR200M58BT	2"	5/16"-1/2"	Black/Silver	100
WBR400M58BT	4"	5/16"-1/2"	Black/Silver	100

BRIDLE RINGS

Bridle Ring with Spring Steel Beam Clamp



WBR200SSBC



- Screws to beam flange up to 1/2" thick
- Serrated jaws deliver additional gripping power
- Nut and lock washer come pre-attached for secure and reliable fastening to the attachment

Part #	Size	Orientation	Flange Thickness	Color	Unit Pkg
WBR125SSBC	1-1/4"	Vertical	up to 1/2"	Black/Silver	100
WBR200SSBC	2"	Vertical	up to 1/2"	Black/Silver	100
WBR400SSBC	4"	Vertical	up to 1/2"	Black/Silver	100
WBR125SSBCSD	1-1/4"	Horizontal	up to 1/2"	Black/Silver	100
WBR200SSBCSD	2"	Horizontal	up to 1/2"	Black/Silver	100
WBR400SSBCSD	4"	Horizontal	up to 1/2"	Black/Silver	100

Bridle Ring with Pressed Beam Clamp



WBR125PBC

- Screws to beam flange up to 1/2" thick
- Serrated jaws deliver additional gripping power
- Nut and lock washer come pre-attached for secure and reliable fastening to the attachment

Part #	Size	Orientation	Flange Thickness	Color	Unit Pkg
WBR125PBC	1-1/4"	Vertical	up to 1/2"	Black/Silver	100
WBR200PBC	2"	Vertical	up to 1/2"	Black/Silver	100
WBR400PBC	4"	Vertical	up to 1/2"	Black/Silver	100
WBR125PBCSD	1-1/4"	Horizontal	up to 1/2"	Black/Silver	100
WBR200PBCSD	2"	Horizontal	up to 1/2"	Black/Silver	100
WBR400PBCSD	4"	Horizontal	up to 1/2"	Black/Silver	100

Bridle Ring with Malleable Beam Clamp



WBR200MBC4T



- Screws to beam flange up to 3/4" thick
- Nut and lock washer come pre-attached for secure and reliable fastening to the attachment

Part #	Size	Orientation	Flange Thickness	Color	Unit Pkg
WBR125MBC4T	1-1/4"	Vertical	up to 3/4"	Silver	50
WBR200MBC4T	2"	Vertical	up to 3/4"	Silver	50
WBR400MBC4T	4"	Vertical	up to 3/4"	Silver	50
WBR125MBC4TSD	1-1/4"	Horizontal	up to 3/4"	Silver	50
WBR200MBC4TSD	2"	Horizontal	up to 3/4"	Silver	50
WBR400MBC4TSD	4"	Horizontal	up to 3/4"	Silver	50

Bridle Ring with Drywall Anchor



WBR200DW

- Self-drilling, screws directly into drywall, no need to locate stud
- Use for horizontal or vertical cable runs

Part #	Size	Mount	Color	Unit Pkg
WBR125DW	1-1/4"	Ceiling or wall	Silver	100
WBR200DW	2"	Ceiling or wall	Silver	100

Painted Bridle Rings

The only painted bridle rings on the market—an exclusive, fast, and cost-effective solution for color-coded cable identification and management across voice, data, low-voltage, and video pathways

- Crafted from heavy-duty, zinc plated steel which allows for great durability & corrosion resistance
- Quick & easy to install without specialized tools or equipment
- Load capacity to 17lbs



Painted Bridle Ring with 1/4-20 Thread, 1.5" Stem



- Secures to 1/4-20 threaded structural attachments, clamps, or anchors for installation to steel beams, threaded rod or concrete, masonry, or metal surfaces
- Secures to strut using spring nuts
- Use for horizontal or vertical cable runs

Part #	Size	Color	Unit Pkg
WBR4T125BK	1-1/4"	Black	100
WBR4T125BU	1-1/4"	Blue	100
WBR4T125RD	1-1/4"	Red	100
WBR4T125WH	1-1/4"	White	100
WBR4T125YL	1-1/4"	Yellow	100

Part #	Size	Color	Unit Pkg
WBR4T200BK	2"	Black	100
WBR4T200BU	2"	Blue	100
WBR4T200RD	2"	Red	100
WBR4T200WH	2"	White	100
WBR4T200YL	2"	Yellow	100

Painted Bridle Ring, Wood Screw Thread



- Drives directly into wooden beams, ceiling joists, backboards, and studs
- Perfect for retrofitting historic wooden structures to meet modern standards
- Use for horizontal or vertical cable runs

Part #	Size	Color	Unit Pkg
WBR125WSBK	1-1/4"	Black	100
WBR125WSRD	1-1/4"	Red	100
WBR125WSWH	1-1/4"	White	100
WBR200WSBK	2"	Black	100
WBR200WSRD	2"	Red	100
WBR200WSWH	2"	White	100

Painted Bridle Ring with Angle Clip



- Secures to ceiling or wall with mounting anchor
- Use for horizontal or vertical cable runs

Part #	Size	Hole Size	Color	Unit Pkg
WBR125BKAC	1-1/4"	1/4"	Black/Silver	100
WBR125RDAC	1-1/4"	1/4"	Red/Silver	100
WBR125WHAC	1-1/4"	1/4"	White/Silver	100
WBR200BKAC	2"	1/4"	Black/Silver	100
WBR200RDAC	2"	1/4"	Red/Silver	100
WBR200WHAC	2"	1/4"	White/Silver	100

Painted Bridle Ring with Multi-Functional Clip



- Secures to 12-gauge wire (pencil rod) or threaded rod up to 3/8" in diameter

Part #	Size	Rod Size	Wire Size	Color	Unit Pkg
WBR125BW34AB	1-1/4"	1/4", 3/8"	#12-#8	Black	100
WBR125BW34AW	1-1/4"	1/4", 3/8"	#12-#8	White	100
WBR200BW34AB	2"	1/4", 3/8"	#12-#8	Black	100
WBR200BW34AW	2"	1/4", 3/8"	#12-#8	White	100

Painted Bridle Ring with Spring Steel Beam Clamp



- Screws to beam flange up to 1/2" thick
- Nut and lock washer come pre-attached for secure fastening to the attachment

Part #	Size	Orientation	Flange Thickness	Color	Unit Pkg
WBR125SSBCAB	1-1/4"	Vertical	up to 1/2"	Black	100
WBR200SSBCAB	2"	Vertical	up to 1/2"	Black	100
WBR125SSBCAW	1-1/4"	Vertical	up to 1/2"	White	100
WBR200SSBCAW	2"	Vertical	up to 1/2"	White	100
WBR125SSBCSDAB	1-1/4"	Horizontal	up to 1/2"	Black	100
WBR200SSBCSDAB	2"	Horizontal	up to 1/2"	Black	100
WBR125SSBCSDAW	1-1/4"	Horizontal	up to 1/2"	White	100
WBR200SSBCSDAW	2"	Horizontal	up to 1/2"	White	100

Painted Bridle Ring with Pressed Beam Clamp



- Screws to beam flange up to 1/2" thick
- Nut and lock washer come pre-attached for secure fastening to the attachment

Part #	Size	Orientation	Flange Thickness	Color	Unit Pkg
WBR125PBCAB	1-1/4"	Vertical	up to 1/2"	Black	100
WBR200PBCAB	2"	Vertical	up to 1/2"	Black	100
WBR125PBCAW	1-1/4"	Vertical	up to 1/2"	White	100
WBR200PBCAW	2"	Vertical	up to 1/2"	White	100
WBR125PBCSDAB	1-1/4"	Horizontal	up to 1/2"	Black	100
WBR200PBCSDAB	2"	Horizontal	up to 1/2"	Black	100
WBR125PBCSDAW	1-1/4"	Horizontal	up to 1/2"	White	100
WBR200PBCSDAW	2"	Horizontal	up to 1/2"	White	100

Painted Bridle Ring with Hammer on Beam Clamp



- Secures to beam flange up to 1/2" thick

Part #	Size	Flange Thickness	Color	Unit Pkg
WBR125M24BTAB	1-1/4"	1/8"-1/4"	Black	100
WBR125M24BTAW	1-1/4"	1/8"-1/4"	White	100
WBR200M24BTAB	2"	1/8"-1/4"	Black	100
WBR200M24BTAW	2"	1/8"-1/4"	White	100
WBR125M58BTAB	1-1/4"	5/16"-1/2"	Black	100
WBR125M58BTAW	1-1/4"	5/16"-1/2"	White	100
WBR200M58BTAB	2"	5/16"-1/2"	Black	100
WBR200M58BTAW	2"	5/16"-1/2"	White	100



BRIDLE RINGS

Saddled Bridle Rings

Fast and cost-effective alternative cable management solution for high-performance wire & cable pathway applications

- Plenum-rated saddle ensures proper bend radius for high-performance category cable & fiber
- Crafted from heavy-duty, zinc plated steel which allows for great durability & corrosion resistance
- Creates a distribution pathway for category cable, PoE, signal & control cable, and fiber cable
- Load capacity to 17lbs
- Suitable for use in air handling systems (plenums) in accordance with Section 300.22 (C) and (D) of the National Electric Code



Saddled Bridle Ring with 1/4-20 Thread



- Secures to 1/4-20 threaded structural attachments, clamps or anchors for installation to steel beams, threaded rod or concrete, masonry, or metal surfaces
- Can also secure to strut using spring nut

Part #	Size	Stem Length	Mounting	Color	Unit Pkg
WBR4T200SDL	2"	1.5"	Ceiling, wall, or attachment	Silver/Yellow	100
WBR4T200SDLBK	2"	1.5"	Ceiling, wall, or attachment	Black	100
WBR4T200SDLWH	2"	1.5"	Ceiling, wall, or attachment	White	100
WBR4T400SDL	4"	1.5"	Ceiling, wall, or attachment	Silver/Yellow	100
WBR4T400SDLBK	4"	1.5"	Ceiling, wall, or attachment	Black	100
WBR4T400SDLWH	4"	1.5"	Ceiling, wall, or attachment	White	100

Saddled Bridle Ring with Wood Screw Thread



- Drives directly into wooden beams, ceiling joists, backboards, and studs
- Perfect for retrofitting historic wooden structures to meet modern standards

Part #	Size	Stem Length	Mounting	Color	Unit Pkg
WBR200SDLWS	2"	1.5"	Ceiling or wall	Silver/Yellow	100

Saddled Bridle Rings provide secure, strain-free routing for fiber and high-performance category cable—ensuring proper support without compromising signal integrity



BRIDLE RINGS

Saddled Bridle Ring with 90° Angle Clip



- Secures to ceiling or wall with mounting anchor

Part #	Size	Hole Size	Color	Unit Pkg
WBRS200AC	2"	1/4"	Silver/Yellow	100
WBRS200BKAC	2"	1/4"	Silver/Black	100
WBRS200WHAC	2"	1/4"	Silver/White	100
WBRS400AC	4"	1/4"	Silver/Yellow	100
WBRS400BKAC	4"	1/4"	Silver/Black	100
WBRS400WHAC	4"	1/4"	Silver/White	100

Saddled Bridle Ring with Spring Steel Beam Clamp



- Screws to beam flange up to 1/2" thick
- Serrated jaws deliver additional gripping power
- Nut and lock washer come pre-attached for secure fastening to the attachment

Part #	Size	Orientation	Flange Thickness	Color	Unit Pkg
WBRS200SSBC	2"	Vertical	up to 1/2"	Black/Silver	100
WBRS200SSBCAB	2"	Vertical	up to 1/2"	Black	100
WBRS200SSBCAW	2"	Vertical	up to 1/2"	White	100
WBRS400SSBC	4"	Vertical	up to 1/2"	Black/Silver	100
WBRS400SSBCAB	4"	Vertical	up to 1/2"	Black	100
WBRS400SSBCAW	4"	Vertical	up to 1/2"	White	100
WBRS200SSBCSD	2"	Horizontal	up to 1/2"	Black/Silver	100
WBRS200SSBCSDAB	2"	Horizontal	up to 1/2"	Black	100
WBRS200SSBCSDAW	2"	Horizontal	up to 1/2"	White	100
WBRS400SSBCSD	4"	Horizontal	up to 1/2"	Black/Silver	100
WBRS400SSBCSDAB	4"	Horizontal	up to 1/2"	Black	100
WBRS400SSBCSDAW	4"	Horizontal	up to 1/2"	White	100

Universal Saddle for 2" Bridle Ring



- Universal design allows for compatibility with most brand of bridle ring
- Plenum-rated saddle ensures an ideal bending radius and secure support for high-performance cable & fiber bundles

Part #	Size	Color	Unit Pkg
WBRS200	2"	Yellow	100

**Magnetic Bridle Rings:  
Mount Smarter, Faster**

See pages 12-13, 16

**No screws. No anchors. No hassle.**



# Structural Attachments

Versatile mounting solutions offers broad compatibility across datacom, telecom, security, electrical, mechanical, and HVAC systems, supporting multiple fastening methods for seamless integration with beams, trusses, ceilings, and walls

## Spring Steel Beam Clamp



WSSBC

- Provides a mounting base for quickly and easily fastening cable management and other hardware to an I-beam and other flanges
- Supports multiple mounting options with 1/4-20 threaded holes (side, bottom, back), 7/16" through holes (top/bottom) for 3/8" rod, and 10-24 threaded side hole for added flexibility
- Serrated jaw for additional gripping power to securely clamp to flange

Part #	Flange Thickness	Color	Unit Pkg
WSSBC	up to 1/2"	Black	100
WSSBCWH	up to 1/2"	White	100

## Pressed Beam Clamp



WPBC

- Provides a mounting base for quickly and easily fastening cable management and other hardware to an I-beam and other flanges
- 1/4" x 20 threaded holes tapped on the back and bottom of clamp for 1/4" threaded rod
- Serrated jaw for additional gripping power to securely clamp to flange

Part #	Flange Thickness	Color	Unit Pkg
WPBC	1/8" to 1/2"	Silver	100
WPBCBK	1/8" to 1/2"	Black	100
WPBCWH	1/8" to 1/2"	White	100

# STRUCTURAL ATTACHMENTS

## Malleable Iron Beam Clamp



WMBC4T

- Provides an easy to install mounting base to an I-beam, girder, or other structural member, saving time and effort on the job site
- High-strength malleable iron
- Zinc-plating provides corrosion resistance
- Universal design allows for use with a multitude of cable management hardware

Part #	Mouth Width	Bolt Size	Hole Tap	Flange Thickness	Color	Unit Pkg
WMBC4T	3/4"	5/16"	1/4-20	up to 3/4"	Silver	50
WMBC4T-138	1-3/8"	1/4"	1/4-20	up to 1-3/8"	Silver	50
WMBC4T-WM	1-3/8"	3/8"	1/4-20	up to 1-3/8"	Silver	25
WMBC12	1-3/8"	1/2"	1/2-13	up to 1-3/8"	Silver	25

## Hammer On Beam Clamp for Bottom Mount



WM24

- Provides a mounting base for securely and easily fastening hardware to a steel beam
- Secures to beam flange 9/16" to 3/4" thick
- 1/4-20 threaded holes on back & bottom
- Includes slot for cable tie

Part #	Flange Thickness	Color	Unit Pkg
WM24	1/8" to 1/4"	Black	100
WM24WH	1/8" to 1/4"	White	100
WM58	5/16" to 1/2"	Black	100
WM58WH	5/16" to 1/2"	White	100
WM912	9/16" to 3/4"	Black	100

## Hammer On Beam Clamp for Side Mount



WHOK-58

- Provides a mounting base for securely and easily fastening hardware to a steel beam
- Secures to beam flange 1/8" to 1/2" thick
- 1/4" hole for side mounting of apparatus such as j hook, s hook, wire, or chain

Part #	Flange Thickness	Color	Unit Pkg
WHOK-24	1/8" to 1/4"	Black	100
WHOK-58	5/16" to 1/2"	Black	100

## Z Purlin Clip



WAF14

W122

- Provides a mounting base for securely and easily fastening cable management hardware to a Z purlin roof framing member
- Use with a multitude of cable management hardware

Part #	Use with	Flange Thickness	Color	Unit Pkg
WAF14	Bolting strap, j hook, jack chain, or wire	1/16"-1/4"	Black	100
W122	Wire, s-hooks, & jack chain	1/16"	Black	100
W123	1/4" threaded rod	1/16"	Black	100

## Multi-Function (Batwing) Clip



WBW34

- Provides a mounting base for fastening cable management hardware to wire or rod
- Keyed with 1/4-20 and 10-24 threaded holes; 1/4" hole
- Provides base support for bridle rings, j hooks, electrical boxes, conduit, and other cable management hardware

Part #	Mounting	Color	Unit Pkg
WBW34	12awg wire or 3/8" rod	Black	100
WBW34WH	12awg wire or 3/8" rod	White	100
W8Z34	1/2", 5/8" Rod	Silver	100

STRUCTURAL ATTACHMENTS

90° Angle Bracket



- Provides a mounting base for securely and easily fastening hardware to threaded rod
- Heavy-duty, pre-galvanized 13-guage steel supports loads without bending or breaking
- Versatile design allows for vertical or horizontal mount applications
- Supporting angle bracket provides an attachment point for a multitude of cable management hardware

Part #	Hole Size 1	Hole Size 2	Stem 1	Stem 2	Color	Unit Pkg
WAC	1/4"	1/4"	1-1/16"	1-1/16"	Silver	100
WACBK	1/4"	1/4"	1-1/16"	1-1/16"	Black	100
WACWH	1/4"	1/4"	1-1/16"	1-1/16"	White	100
WAC38	1/4"	3/8"	1-1/16"	1-1/16"	Silver	100
WAC4T-300	1/4"	1/4"	1-1/16"	3"	Silver	100
WAC12-300	1/4"	1/2"	1-1/16"	3"	Silver	100
WANGLE4T	1/4"	1/4-20 Eyelet	1-3/16"	1-7/8"	Silver	100

90° Angle Bracket with Powder Actuated Shot



- Provides a mounting base for securely and easily fastening hardware to concrete or steel
- Compatible with Ramset, Hilti, and Powers nail guns
- Secures to concrete, masonry, steel or composite metal decking using powder actuated or single-shot gas gun

Part #	Hole Size	Stem 1	Stem 2	Color	Unit Pkg
WACPA	1/4"	1-3/16"	1-1/16"	Silver	100
WACTUATED4T	1/4-20 Eyelet	1-3/16"	1-7/8"	Silver	100

Threaded Rod Hanger



- Supports wire or threaded rod from concrete or block walls
- Hanger can be combined with other fasteners to make the installation on beams, purlins or stud possible
- Threaded bottom hole supports wire or rod parallel to the wall
- 1/4" unthreaded side hole is used for installation

Part #	Use with	Color	Unit Pkg
W4TI	1/4" threaded rod	Black	100
W6TI	3/8" threaded rod	Black	100

Snap Close Conduit Clip

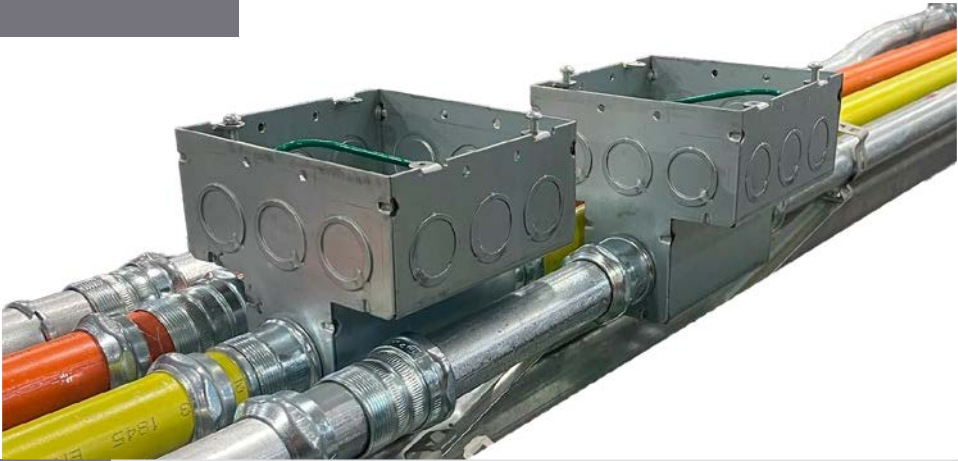


- Designed to securely hold 1/2" to 3/4" EMT and rigid conduits
- Low-profile locking design
- Use for vertical or horizontal installations

Part #	Use with	Hole Size	Color	Unit Pkg
W812M	1/2", 3/4" conduit	1/4"	Black	100
W16M	3/4", 1" conduit	1/4"	Black	100

ELECTRICAL

Winnie Industries' variety of **electrical products** provides a quality, but yet cost-effective solution for commercial and industrial applications



T Box™ Square Electrical Junction Box

Engineered for clean, straight-entry conduit alignment—streamlining installation, reducing strain, and ensuring a professional finish



WTBOX232



WTBOX257

- Crafted from heavy-duty pre-galvanized steel for lasting durability, corrosion resistance, and dependable performance
- Easier wire pulls with rapid prefab integration, streamlining workflows, reducing onsite labor, and driving smarter jobsite performance
- Save time by simplifying complex layouts, eliminating conduit bends, cutting labor costs, and ensuring precision from planning to final pull
- Provides ample room for complex wiring configurations, deep-profile apparatus, and future additions
- Meets key industry standards for electrical junction boxes—rated for use in circuits up to 600V to ensure safe, code-compliant performance in commercial, industrial, and residential applications

Part #	Size	Capacity	Knockouts	Color	Unit Pkg
WTBOX232	4"	43 cu. in.	(8) 1/2" knockouts	Silver	20
WTBOX232RD			(6) 1/2" - 3/4" knockouts	Red	20
WTBOX257	4-11/16"	60 cu. in.	(2) 1"-3/4" knockouts	Silver	10
WTBOX257RD			(12) 3/4" - 1/2" knockouts	Red	10

Patent US D1,022,919 S



WTBOX232RD



Smooth Setup. Zero Hassle. Pure T Box™

Designed with flexibility and prefab in mind, it installs quickly and tested, complies with UL 514-A and CSA C22.2 No. 18.1 standard for metallic outlet boxes



T Box™ Square Electrical Junction Box with Mounting Bracket

Upgrade your installs with the Winnie Industries T Box™, featuring a pre-attached Mounting Bracket that eliminates unnecessary steps—typically requiring just one hammer drill hole per install

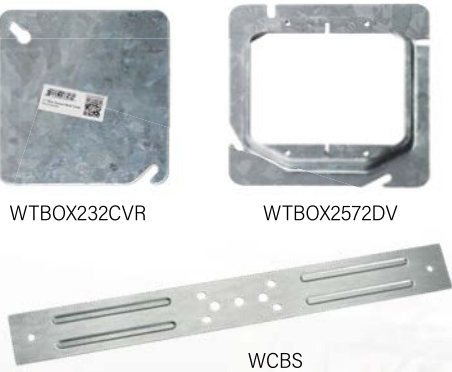


- Crafted from heavy-duty pre-galvanized steel for lasting durability, corrosion resistance, and dependable performance
- Save time by simplifying complex layouts, eliminating conduit bends, cutting labor costs, and ensuring precision from planning to final pull
- Provides ample room for complex wiring configurations, deep-profile apparatus, and future additions
- Conduit clamps provide a secure mechanical bond between conduit and box

Part #	Size	Capacity	Knockouts	Color	Unit Pkg
WTBOX232-812	4"	43 cu. in.	(8) 1/2" knockouts	Silver/Black	10
WTBOX232-CBS			(6) 1/2" - 3/4" knockouts	Red	10
WTBOX257-16M	4-11/16"	60 cu. in.	(2) 1"-3/4" knockouts	Silver/Black	10
WTBOX257-CBS			(12) 3/4" - 1/2" knockouts	Silver	10

Patent US 2025024688 A1

T Box™ Accessories



- Accessories designed to fit T Box™ and similar junction box sizes

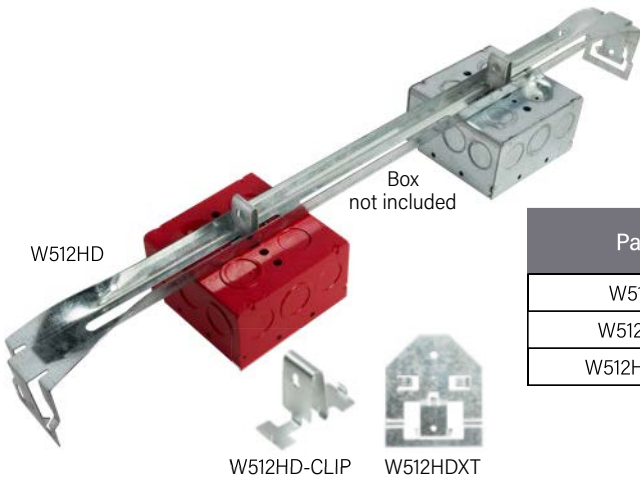
Part #	Description	Color	Unit Pkg
WTBOX232CVR	4" Square Metal Cover	Silver	50
WTBOX257CVR	4-11/16" Metal Cover	Silver	50
WTBOX2571DV	4-11/16" Square Single-Gang Device Cover, 1/2" Raised	Silver	50
WTBOX2572DV	4-11/16" Square Double-Gang Device Cover, 1/2" Raised	Silver	50
WCBS	Heavy-Duty Conduit Box Support Bracket	Silver	50

No Bends. No Hassle. Just T Box™

Winnie Industries T Box™ can be used in most places standard electrical junction boxes can be installed. They are commonly used in commercial and industrial environments to house wiring for lighting, outlets, and equipment. They're mounted on walls, ceilings, strut, or machinery, providing a protected path for conductors. In assembly line or factory environments, they serve as connection hubs for power, controls, and sensors, often integrated into modular conduit racks or suspended from overhead structures. Whether part of a direct field install or prefabricated system, conduit-fed junction T Boxes offer clean, code-compliant wire management with flexible routing and simplified maintenance.



Heavy-Duty T-Bar Electrical Box Hanger



- Crafted from heavy-duty pre-galvanized steel which allows for great durability
- Mounts an electrical box to T-bar ceiling grid
- Use with 1-1/2" or 2-1/8" deep electrical boxes
- UL & CUL listed

Part #	Description	Color	Unit Pkg
W512HD	24" Heavy-Duty T-Bar Electrical Box Hanger	Silver	25
W512HDXT	3-5/8" Extension Bracket	Silver	50
W512HD-CLIP	T-Bar Mounting Clip	Silver	50

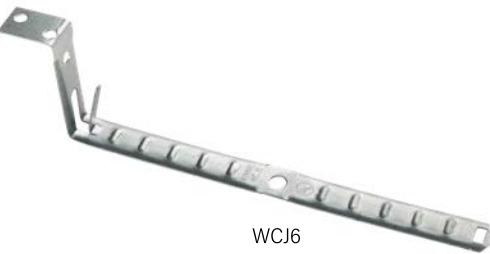
T-Bar Electrical Box Hanger



- Supports electrical boxes in drop ceilings
- Use with 1-1/2" or 2-1/8" deep electrical boxes

Part #	Description	Color	Unit Pkg
W512	24" Ceiling Grid T-Bar Hanger, Mounting Clip	Silver	50

Cable Support with Locking Tab



- Adjustable height for various electrical box depths
- Supports up to 6 cables
- Ideal for NM and MC/AC/BX cable
- Additionally supports category cable, low-voltage wire
- Works with wood studs, metal studs, furring strips, and hat channels
- NEC 300.4D compliant helps meet spacing and protection requirements
- UL/CUL listed

Part #	Color	Unit Pkg
WCJ6	Silver	100

Grounding Lugs



- Crafted from aluminum
- For use in terminal boxes, enclosures, or load centers

Part #	Size	Color	Unit Pkg
4-14AL	#14-#4 AWG	Silver	100
1/0-8AL	1/0-8 AWG	Silver	100
3-0-6AL	3/0-6 AWG	Silver	100
250MCM-6AL	250MCM-6 AWG	Silver	100



LOW-VOLTAGE ACCESSORIES

Power up your **low-voltage** installs with Winnie Industries' innovation-driven accessories—engineered for seamless integration and unwavering performance across datacom, electrical, mechanical, and security systems



Drywall Mounting Bracket



WCMB-1

- Constructed from pre-galvanized steel for enhanced durability and corrosion resistance
- Engineered to fit drywall 1/2" to 1-1/2" thick
- Streamline installation by eliminating the need for an electrical box
- Designed to fit seamlessly with all standard faceplates and hardware
- Includes mounting hardware

Part #	Size	Color	Unit Pkg
WCMB-1	Single-Gang	Silver	100
WCMB-2	Double-Gang	Silver	100

For low-voltage Class 2 applications only

Low-Voltage Cable Manager



WHK200

- Constructed from pre-galvanized steel for enhanced durability and corrosion resistance
- One-piece design, push to close to secure cables
- Ideal for all types of category cable, low-voltage wire, fiber cable, innerduct, and flexible conduit
- Easy installation to wall or ceiling
- Ideal for use in suspended ceiling

Part #	Size	Color	Unit Pkg
WHK200	2"	Silver	100

Distribution Ring



WDR-200

- Routes and secures insulated wire & cable along walls, ceilings, racks, communication boards, audio boards, or splitter boards
- Supports service loops near terminations or distribution points, preserving bend radius and keeping slack organized
- Durable die-cast aluminum
- Use for horizontal or vertical cable runs

Part #	Size	Color	Unit Pkg
WDR-200	2"	Silver	50
WDR-300	3"	Silver	50
WDR-500	5"	Silver	50

LOW-VOLTAGE ACCESSORIES

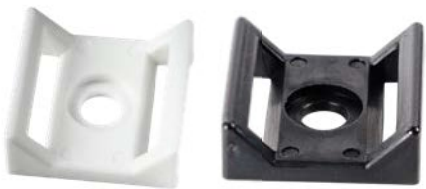
Nail-In Drive Ring



- Manufactured from corrosion-resistant galvanized steel
- Supports electrical, SE, SEU, low-voltage, and communications wire & cable
- Can be used on outside walls, inside walls, wood studs, and utility poles

Part #	Size	Color	Unit Pkg
WDRV-12	1/2"	Silver	50
WDRV-58	5/8"	Silver	25
WDRV-78	7/8"	Silver	25
WDRV-114	1-1/4"	Silver	25

Screw Mount Cable Clips



WHLMBK

WHLMWH



WCTMBK

WCTMWH



WCH100WH

WCH100BK

- Cable mount cradles wire & cable bundle so there is no pinching
- Locking gate holder locks closed securing cable in place
- Durable, plenum-rated copolymer plastic mount provides long-lasting reliability in wet or dry environments
- Black plastic provides UV resistance to avoid degradation caused by ultraviolet rays
- 3/16" countersunk screw mounting hole

Part #	Slot Width	Style	Color	Unit Pkg
WHLMBK	1"	Hook & Loop	Black	100
WHLMWH	1"	Hook & Loop	White	100
WCTMBK	0.19"	Cable Tie	Black	100
WCTMWH	0.19"	Cable Tie	White	100
WCTMBK38	0.38"	Cable Tie	Black	100
WCTMWH38	0.38"	Cable Tie	White	100
WCTMBK50	0.50"	Cable Tie	Black	100
WCTMWH50	0.50"	Cable Tie	White	100
WCH050BK	0.50"	Locking Gate	Black	100
WCH050WH	0.50"	Locking Gate	White	100
WCH075BK	0.75"	Locking Gate	Black	100
WCH075WH	0.75"	Locking Gate	White	100
WCH100BK	1"	Locking Gate	Black	100
WCH100WH	1"	Locking Gate	White	100
WCH125BK	1.25"	Locking Gate	Black	100
WCH125WH	1.25"	Locking Gate	White	100

Hook & Loop, Bulk



075GRIPTAPE

- Cut to a defined length to match your requirements
- Higher hook density provides more gripping points, resulting in increased strength and durability

Part #	Slot Width	Length	Color	Unit Pkg
050GRIPTAPE	1/2"	75ft	Black	1
050GRIPTAPEWH	1/2"	75ft	White	1
075GRIPTAPE	3/4"	75ft	Black	1
075GRIPTAPEWH	3/4"	75ft	White	1

Pre-Cut EMT Conduit Wall Sleeve

PRE-CUT  
FIELD-READY



- Mounts securely to strut or directly onto the wall for flexible installation
- Designed for ceiling mount as a supply conduit or seamless room pass-thru
- Streamlines installation by eliminating the need for finding and cutting in the field
- Includes wall clamp, strut clamp, and plenum-rated bushings



Part #	Size	Length	Color	Unit Pkg
WEZS200EMT	2"	15"	Silver	1
WEZS300EMT	3"	15"	Silver	1
WEZS400EMT	4"	15"	Silver	1

Press-On Insulated Bushing, Plenum Rated



- Use at conduit terminations to guide cables through with minimal friction

Part #	Size	Color	Unit Pkg
WEMT-200	2"	Gray	50
WEMT-300	3"	Gray	20
WEMT-400	4"	Gray	20

Universal Camera Pole Mount Kit



- Epoxy coating allows for indoor or outdoor use
- Includes 2 sets of stainless-steel bands 12" and 24" long

Part #	Color	Unit Pkg
WUCPM350	Gray	2



Extension Bracket



- Allows for multiple tiers of j hooks or bridle rings to be vertically mounted
- Pre-drilled 1/4" hole for wall mount and ensures compatibility with various fasteners

Part #	Style	Mount	Color	Unit Pkg
WACEXT	Angled	Ceiling	Silver	50
WFLTEXT	Flat	Wall	Silver	50

316 STAINLESS STEEL

Corrosion-resistant cable management solution for harsh environments in commercial, manufacturing, and industrial cable pathway applications

- Crafted from premium grade 316 stainless steel
- Superior corrosion resistance in aggressive environments
- Resists rust and/or high temperatures
- Maintains structural integrity under mechanical stress and extreme temperatures
- Ideal for use in marine and highly acidic environments, underwater equipment, food, and pharmaceutical applications
- Creates a distribution pathway for category cable, PoE, fire alarm cable, low-voltage cable, fiber cable, signal, and control cable

316 Stainless Steel J Hook



- Intuitively designed for multiple mounting options to organize and route cables
- Install directly to ceiling or wall using stainless steel screw or mounting anchor
- Attach to numerous stainless steel structural attachments
- Complies with NEC and TIA/EIA requirements for structured cabling systems

Part #	Size	Hole Size	Color	Unit Pkg
WJH12SS	3/4"	1/4"	Silver	100
WJH21SS	1-5/16"	1/4"	Silver	100
WJH32SS	2"	1/4"	Silver	100
WJH64SS	4"	1/4"	Silver	25

316 Stainless Steel Bridle Ring



- Fastens to 1/4-20 threaded stainless steel structural attachments, clamps or anchors for installation to steel beams, threaded rod or concrete, masonry, or metal surfaces
- Can also secure to strut using stainless steel spring nuts
- Use for horizontal or vertical cable runs
- Load capacity to 17lbs

Part #	Size	Color	Unit Pkg
WBR4T125SS	1-1/4"	Silver	100
WBR4T200SS	2"	Silver	100
WBR4T400SS	4"	Silver	100

90° 316 Stainless Steel Angle Bracket, 1/4" Hole



- Provides base support for j hooks, wire, threaded rod, S-hooks, chain, or other hardware or appliances
- Secures to ceiling or wall with stainless steel screw or mounting anchor

Part #	Hole Size	Color	Unit Pkg
WACSS	1/4"	Silver	100

90° 316 Stainless Steel Angle Clip with 1/4-20 Threaded Eyelet



- Provides base support for 1/4-20 hanging rod, bridle rings, conduit hangers, ceiling wire, jack chain, eye lag screws, and other cable management hardware
- Secures to ceiling or wall with stainless steel screw or mounting anchor

Part #	Size	Color	Unit Pkg
WANGLE4TSS	1/4"	Silver	100

050GRIPTAPE.....55	WBR125SSBC.....43	WBR4T125BU.....44	WBR5400WHAC.....47	WJH12ACBPC2.....24	WJH21ACM24AB.....35	WJH32AC.....20	WJH32SSBCU.....21	WJH64ORMAG.....15	WJHT-2JH96SD.....38	WMAG16WH-10.....5	WMCH075WH-10.....10
050GRIPTAPEWH.....55	WBR125SSBCAB.....45	WBR4T125RD.....44	WBW34.....49	WJH12ACBPCAB.....34	WJH21ACM24AW.....37	WJH32AC123.....27	WJH32W.....28	WJH64PBC.....23	WJHT-3JH21SD.....38	WMAG26.....5	WMCH100AB.....10
075GRIPTAPE.....55	WBR125SSBCAW.....45	WBR4T125SS.....57	WBW34WH.....49	WJH12ACBPCAW.....37	WJH21ACM58.....36	WJH32AC38.....20	WJH32W8Z.....28	WJH64PBCAB.....34	WJHT-3JH32SD.....38	WMAG26-10.....5	WMCH100AB-10.....10
075GRIPTAPEWH.....55	WBR125SSBCSD.....43	WBR4T125WH.....44	WCBS.....52	WJH12ACSSBC.....22	WJH21ACM58AB.....35	WJH32AC4T-300.....20	WJH32WAB.....35	WJH64PCAW.....37	WJHT-3JH64SD.....38	WMAG26BK.....5	WMCH100AW.....10
1/0-8AL.....53	WBR125SSBCSDAB.....45	WBR4T125YL.....44	WCH050BK.....55	WJH12ACSSBCAB.....33	WJH21ACM58AW.....37	WJH32ACAB.....33	WJH32WAW.....37	WJH64PU.....32	WJHT-3JH96SD.....38	WMAG26BK-10.....5	WMCH100AW-10.....10
250MCM-6AL.....53	WBR125SSBCSDAW.....45	WBR4T200.....41	WCH050WH.....55	WJH12ACSSBCAW.....36	WJH21ACM912.....26	WJH32ACAW.....36	WJH32WH.....31	WJH64PUACMAG.....15	WJHT-4JH21DBL.....39	WMAG26CC050AB.....11	WMCH100BK.....10
3-0-6AL.....53	WBR125WHAC.....44	WBR4T200BK.....44	WCH075BK.....55	WJH12ACSSBCU.....22	WJH21ACMAG.....14	WJH32ACM24.....26	WJH32WHACMAG.....15	WJH64PUMAG.....15	WJHT-4JH21SD.....38	WMAG26CC050AB-10.....11	WMCH100BK-10.....10
4-14AL.....53	WBR125WS.....41	WBR4T200BU.....44	WCH075WH.....55	WJH12AF14.....27	WJH21ACPA.....29	WJH32ACM24AB.....35	WJH32WHMAG.....15	WJH64RD.....32	WJHT-4JH32DBL.....39	WMAG26CT38AB.....8	WMCH100WH.....10
W122.....49	WBR125WSBK.....44	WBR4T200RD.....44	WCH100BK.....55	WJH12AF14AB.....34	WJH21ACBPC.....23	WJH32ACM24AW.....37	WJH32YL.....32	WJH64RDACMAG.....15	WJHT-4JH32SD.....38	WMAG26CT38AB-10.....8	WMCH100WH-10.....10
W123.....49	WBR125WSRD.....44	WBR4T200SDL.....46	WCH100WH.....55	WJH12BK.....31	WJH21ACBPC2.....24	WJH32ACM58.....26	WJH32YLACMAG.....15	WJH64RDMAG.....15	WJHT-4JH64DBL.....39	WMAG26CT38AW.....8	WMCH125AB.....10
W16M.....50	WBR125WSWH.....44	WBR4T200SDLBK.....46	WCH125BK.....55	WJH12BKACMAG.....15	WJH21ACBPCAB.....34	WJH32ACM58AB.....35	WJH32YLMAG.....15	WJH64SS.....57	WJHT-4JH64SD.....38	WMAG26CT38AW-10.....8	WMCH125AB-10.....10
W3MAG26-2T.....11	WBR200AC.....42	WBR4T200SDLWH.....46	WCH125WH.....55	WJH12BKMAG.....15	WJH21ACBPCAW.....37	WJH32ACM58AW.....37	WJH400ROLL.....25	WJH64SSBC.....21	WJHT-4JH64DBL.....39	WMAG26CT50AB.....8	WMCH125AW.....10
W4TI.....50	WBR200ACT.....42	WBR4T200SS.....57	WCJ6.....53	WJH12BU.....32	WJH21ACSSBC.....22	WJH32ACM912.....26	WJH400RTAN.....26	WJH64SSBCAB.....33	WJHT-4JH96SD.....38	WMAG26CT50AB-10.....8	WMCH125AW-10.....10
W512.....53	WBR200BKAC.....44	WBR4T200WH.....44	WCMB-1.....54	WJH12BUACMAG.....15	WJH21ACSSBCAB.....33	WJH32ACMAG.....14	WJH64.....19	WJH64SSBCAW.....36	WJHT-6JH21DBL.....39	WMAG26CT50AW.....8	WMCH125BK.....10
W512HD.....53	WBR200BW34.....42	WBR4T200YL.....44	WCMB-2.....54	WJH12BUMAG.....15	WJH21ACSSBCAW.....36	WJH32ACPA.....29	WJH64AC.....20	WJH64SSBCU.....21	WJHT-6JH32DBL.....39	WMAG26CT50AW-10.....8	WMCH125BK-10.....10
W512HD-CLIP.....53	WBR200BW34AB.....44	WBR4T400.....41	WCTMBK.....55	WJH12CC075.....29	WJH21ACSSBCU.....22	WJH32ACBPC.....23	WJH64AC123.....27	WJH64W.....28	WJHT-6JH64DBL.....39	WMAG26CTAB.....8	WMCH125WH.....10
W512HDXT.....53	WBR200BW34AW.....44	WBR4T400SDL.....46	WCTMBK38.....55	WJH12CC100.....29	WJH21AF14.....27	WJH32ACBPC2.....24	WJH64AC38.....20	WJH64W8Z.....28	WJHT-6JH96DBL.....39	WMAG26CTAB-10.....8	WMCH125WH-10.....10
W6TI.....50	WBR200DW.....43	WBR4T400SDLBK.....46	WCTMBK50.....55	WJH12GR.....32	WJH21AF14AB.....34	WJH32ACBPCAB.....34	WJH64AC4T-300.....20	WJH64WAB.....35	WM24.....49	WMAG26CTAW.....8	WPBC.....48
W812M.....50	WBR200LONG.....41	WBR4T400SDLWH.....46	WCTMWH.....55	WJH12GRACMAG.....15	WJH21BK.....31	WJH32ACBPCAW.....37	WJH64ACAB.....33	WJH64WAW.....37	WM24WH.....49	WMAG26CTAW-10.....8	WPBCBK.....48
W8234.....49	WBR200M24BT.....42	WBR4T400SS.....57	WCTMWH38.....55	WJH12GRMAG.....15	WJH21BKACMAG.....15	WJH32ACSSBC.....22	WJH64ACAW.....36	WJH64WH.....31	WM58.....49	WMAG26CTUV.....9	WPBCWH.....48
WAC.....50	WBR200M24TAB.....45	WBRL075MAG.....12	WCTMWH50.....55	WJH12HOK-24.....25	WJH21BKMAG.....15	WJH32ACSSBCAB.....33	WJH64ACM24.....26	WJH64WHACMAG.....15	WM58WH.....49	WMAG26CTUV-10.....9	WSSBC.....48
WAC12-300.....50	WBR200M24TAW.....45	WBRL075MAG-10.....12	WDR-200.....55	WJH12HOK-24AB.....35	WJH21BU.....32	WJH32ACSSBCAW.....36	WJH64ACM24AB.....35	WJH64WHMAG.....15	WM912.....49	WMAG26CTWH.....9	WSSBCWH.....48
WAC38.....50	WBR200M58BT.....42	WBRL125MAG.....12	WDR-200MAG1420.....11	WJH12HOK-58.....25	WJH21BUACMAG.....15	WJH32ACSSBCU.....22	WJH64ACM24AW.....37	WJH64YL.....32	WMAG1420.....5	WMAG26CTWH-10.....9	WTBOX232.....51
WAC4T-300.....50	WBR200M58BTAB.....45	WBRL125MAG-10.....12	WDR-300.....55	WJH12HOK-58AB.....35	WJH21BUMAG.....15	WJH32AF14.....27	WJH64ACM58.....26	WJH64YLACMAG.....15	WMAG1420-10.....5	WMAG26GK.....11	WTBOX232-812.....52
WACBK.....50	WBR200M58BTAW.....45	WBRL125MAGBK.....13	WDR-300MAG1420.....11	WJH12MAG.....14	WJH21CC075.....29	WJH32AF14AB.....34	WJH64ACM58AB.....35	WJH64YLMAG.....15	WMAG1420412.....11	WMAG26HK-10.....11	WTBOX232-CBS.....52
WACEXT.....56	WBR200MAG.....12	WBRL125MAGBU.....13	WDR-500.....55	WJH12MBC4T.....24	WJH21CC100.....29	WJH32BK.....31	WJH64ACM58AW.....37	WJH96.....19	WMAG1420438.....11	WMAG26HLAB.....7	WTBOX232CVR.....52
WACPA.....50	WBR200MAG-10.....12	WBRL125MAGRD.....13	WDR-500MAG1420.....11	WJH12OR.....32	WJH21GR.....32	WJH32BKACMAG.....15	WJH64ACM912.....26	WJH96AC.....20	WMAG14204TM.....11	WMAG26HLAB-10.....7	WTBOX232RD.....51
WACSS.....57	WBR200MBC4T.....43	WBRL125MAGWH.....13	WDRV-112.....55	WJH12ORACMAG.....15	WJH21GRACMAG.....15	WJH32BKMAG.....15	WJH64ACMAG.....14	WJH96AC123.....27	WMAG1420-52.....5	WMAG26HLAW.....7	WTBOX257.....51
WACTUATED4T.....50	WBR200MBC4TSD.....43	WBRL125MAGYL.....13	WDRV-114.....55	WJH12ORMAG.....15	WJH21GRMAG.....15	WJH32BU.....32	WJH64ACPA.....29	WJH96AC38.....20	WMAG1420AC.....11	WMAG26HLAW-10.....7	WTBOX257-16M.....52
WACWH.....50	WBR200PBC.....43	WBRL200MAG.....12	WDRV-12.....55	WJH12PBC.....23	WJH21HOK-24.....25	WJH32BUACMAG.....15	WJH64ACBPC.....23	WJH96AC4T-300.....20	WMAG1420CT38UV.....8	WMAG26HLBK.....7	WTBOX2571DV.....52
WAF14.....49	WBR200PBCAB.....45	WBRL200MAG-10.....12	WDRV-58.....55	WJH12PBCAB.....34	WJH21HOK-24AB.....35	WJH32BUMAG.....15	WJH64ACBPC2.....24	WJH96ACM24.....26	WMAG1420CT38UV-10.....8	WMAG26HLBK-10.....7	WTBOX2572DV.....52
WANGLE4T.....50	WBR200PBCAW.....45	WBRL200MAGBK.....13	WDRV-78.....55	WJH12PBCAW.....37	WJH21HOK-58.....25	WJH32CC075.....29	WJH64ACBPCAB.....34	WJH96ACM58.....26	WMAG1420CT38WH.....8	WMAG26HLWH.....7	WTBOX257-CBS.....52
WANGLE4TSS.....57	WBR200PBCSD.....43	WBRL200MAGBU.....13	WEMT-200.....56	WJH12PU.....32	WJH21HOK-58AB.....35	WJH32CC100.....29	WJH64ACBPCAW.....37	WJH96ACM912.....26	WMAG1420CT38WH-10.....8	WMAG26HLWH-10.....7	WTBOX257CVR.....52
WBR075MAG.....12	WBR200PBCSDAB.....45	WBRL200MAGRD.....13	WEMT-300.....56	WJH12PUACMAG.....15	WJH21MAG.....14	WJH32GR.....32	WJH64ACSSBC.....22	WJH96ACMAG.....14	WMAG1420CT50UV.....8	WMAG26WH.....5	WTBOX257RD.....51
WBR075MAG-10.....12	WBR200PBCSDAW.....45	WBRL200MAGWH.....13	WEMT-400.....56	WJH12PUMAG.....15	WJH21MBC4T.....24	WJH32GRACMAG.....15	WJH64ACSSBCAB.....33	WJH96ACPA.....29	WMAG1420CT50UV-10.....8	WMAG26WH-10.....5	WUCPM350.....56
WBR075MAGBK.....12	WBR200RDAC.....44	WBRL200MAGYL.....13	WEZS200EMT.....56	WJH12RD.....32	WJH21OR.....32	WJH32GRMAG.....15	WJH64ACSSBCAW.....36	WJH96ACBPC.....23	WMAG1420CT50WH.....8	WMAG40.....5	WUMAG-1420UHD.....5
WBR075MAGBK-10.....12	WBR200SDLMAG*.....13	WBRL200SDLBKMAG.....13	WEZS300EMT.....56	WJH12RDACMAG.....15	WJH21ORACMAG.....15	WJH32HOK-24.....25	WJH64ACSSBCU.....22	WJH96ACBPC2.....24	WMAG1420CT50WH-10.....8	WMAG40-10.....5	WUMAG-LINK.....17
WBR125AC.....42	WBR200SDLWS.....46	WBRL200SDLMAG.....13	WEZS400EMT.....56	WJH12RDMAG.....15	WJH21ORMAG.....15	WJH32HOK-24AB.....35	WJH64AF14.....27	WJH96ACSSBC.....22	WMAG1420HLBK.....6	WMAG5CTBK.....9	WUMAG-WBR125SHORT.....16
WBR125ACT.....42	WBR200SHORT.....41	WBRL200SDLWHMAG.....13	WFLTEXT.....56	WJH12SS.....57	WJH21ORACMAG.....15	WJH32HOK-58.....25	WJH64AF14AB.....34	WJH96ACSSBCU.....22	WMAG1420HLBK-10.....6	WMAG5CTBK-10.....9	WUMAG-WBR200SHORT.....16
WBR125BKAC.....44	WBR200SSBC.....43	WBRL400MAG.....12	WHK200.....54	WJH12SSBC.....21	WJH21ORACMAG.....15	WJH32HOK-58AB.....35	WJH64BK.....31	WJH96AF14.....27	WMAG1420HLWH.....6	WMBC12.....49	WUMAG-WBR200SHORTSDL.....16
WBR125BW34.....42	WBR200SSBCAB.....45	WBRL400MAG-10.....12	WHLMBK.....55	WJH12SSBCAB.....33	WJH21ORACMAG.....15	WJH32MAG.....14	WJH64BKACMAG.....15	WJH96CC075.....29	WMAG1420HLWH-10.....6	WMBC4T.....49	WUMAG-WBR4T125.....16
WBR125BW34AB.....44	WBR200SSBCAW.....45	WBRL400MAG-10.....12	WHLMWH.....55	WJH12SSBCAW.....36	WJH21ORMAG.....15	WJH32MBC4T.....24	WJH64BKMAG.....15	WJH96CC100.....29	WMAG16.....5	WMBC4T-138.....49	WUMAG-WBR4T200.....16
WBR125BW34AW.....44	WBR200SSBCSD.....43	WBRL400SDLBKMAG.....13	WHOK-24.....49	WJH12SSBCU.....21	WJH21ORMAG.....15	WJH32OR.....32	WJH64BU.....32	WJH96HOK-24.....25	WMAG16-10.....5	WMBC4T-WM.....49	WUMAG-WBR4T200SDL.....16
WBR125DW.....43	WBR200SSBCSDAB.....45	WBRL400SDLMAG.....13	WHOK-58.....49	WJH12W.....28	WJH21ORACMAG.....15	WJH32ORACMAG.....15	WJH64BUACMAG.....15	WJH96HOK-58.....25	WMAG16BK.....5	WMCH050AB.....10	WUMAG-WBR4T200SDLBK.....16
WBR125LONG.....41	WBR200SSBCSDAW.....45	WBRL400SDLWHMAG.....13	WJH12.....19	WJH12W8Z.....28	WJH21ORACMAG.....15	WJH32ORMAG.....15	WJH64BUMAG.....15	WJH96MAG.....14	WMAG16BK-10.....5	WMCH050AB-10.....10	WUMAG-WBR4T200SS.....16
WBR125M24BT.....42	WBR200WHAC.....44	WBR5200.....47	WJH125ROLL.....25	WJH12WAB.....35	WJH21ORMAG.....15	WJH32PBC.....23	WJH64CC075.....29	WJH96MBC4T.....24	WMAG16CTAB.....9	WMCH050AW.....10	WUMAG-WBR4T400.....16
WBR125M24BTAB.....45	WBR200WS.....41	WBR5200AC.....47	WJH125RTAN.....26	WJH12WAW.....37	WJH21ORMAG.....15	WJH32PBCAB.....34	WJH64CC100.....29	WJH96PBC.....23	WMAG16CTAB-10.....9	WMCH050AW-10.....10	WUMAG-WBR4T400SDL.....16
WBR125M24BTAW.....45	WBR200WSBK.....44	WBR5200BKAC.....47	WJH12AC.....20	WJH12WH.....31	WJH21ORMAG.....15	WJH32PBCAW.....37	WJH64GR.....32	WJH96PBC.....21	WMAG16CTAW.....9	WMCH050BK.....10	WUMAG-WBR4T400SDLBK.16
WBR125M58BT.....42	WBR200WSRD.....44	WBR5200SSBC.....47	WJH12AC123.....27	WJH12WHACMAG.....15	WJH21SS.....57	WJH32PU.....32	WJH64GRACMAG.....15	WJH96SSBCU.....21	WMAG16CTAW-10.....9	WMCH050BK-10.....10	WUMAG-WJH12.....17
WBR125M58BTAB.....45	WBR200WSWH.....44	WBR5200SSBCAB.....47	WJH12AC38.....20	WJH12WHMAG.....15	WJH21SSBC.....21	WJH32PUACMAG.....15	WJH64GRMAG.....15	WJH96SSBC.....21	WMAG16CTUV.....9	WMCH050WH.....10	WUMAG-WJH12AC.....17
WBR125M58BTAW.....45	WBR400AC.....42	WBR5200SSBCAW.....47	WJH12AC4T-300.....20	WJH12YLMAG.....15	WJH21SSBCAB.....33	WJH32PUMAG.....28	WJH64HOK-24.....25	WJH96W8Z.....28	WMAG16CTUV-10.....9	WMCH050WH-10.....10	WUMAG-WJH21.....17
WBR125MAG.....12	WBR400ACT.....42	WBR5200SSBCSD.....47	WJH12ACAB.....33	WJH12YLACMAG.....15	WJH21SSBCU.....21	WJH32RD.....32	WJHT-2JH21DBL.....39	WJH96W8Z.....28	WMAG16CTWH.....9	WMCH075AB.....10	WUMAG-WJH21AC.....17
WBR125MAG-10.....12	WBR400BW34.....42	WBR5200SSBCSDAB.....47	WJH12ACAW.....36	WJH12YLMAG.....15	WJH21W.....28	WJH32RDACMAG.....15	WJHT-2JH21SD.....38	WJH96MAG.....14	WMAG16CTWH-10.....9	WMCH075AB-10.....10	WUMAG-WJH32.....17
WBR125MBC4T.....43	WBR400M24BT.....42	WBR5200SSBCSDAW.....47	WJH12ACM24.....26	WJH200ROLL.....25	WJH21W8Z.....28	WJH32RDMAG.....15	WJHT-2JH32DBL.....39	WJH96MBC4T.....24	WMAG16PCB-12.....11	WMCH075AW.....10	WUMAG-WJH32AC.....17
WBR125MBC4TSD.....43	WBR400M58BT.....42	WBR5200WHAC.....47	WJH12ACM24AB.....35	WJH200RTAN.....26	WJH21WAB.....35	WJH32SS.....57	WJHT-2JH32SD.....38	WJH96PBC.....23	WMAG16PCB-24.....11	WMCH075AW-10.....10	WUMAG-WJH64.....17
WBR125PBC.....43	WBR400MBC4T.....43	WBR5400AC.....47	WJH12ACM24AW.....37	WJH21.....19	WJH21WAW.....37	WJH32SSBC.....21	WJHT-2JH64DBL.....39	WJH96PBC.....21	WMAG16PCB-4.....11	WMCH075BK.....10	WUMAG-WJH64AC.....17
WBR125PBCAB.....45	WBR400MBC4TSD.....43	WBR5400BKAC.....47	WJH12ACM58.....26	WJH21AC.....20	WJH21WH.....31	WJH32SSBCAB.....33	WJHT-2JH64SD.....38	WJH96SSBCU.....21	WMAG16PCB-8.....11	WMCH075BK-10.....10	WUMAG-WJH96.....17
WBR125PBCAW.....45	WBR400PBC.....43	WBR5400SSBC.....47	WJH12ACM58AB.....35	WJH21AC123.....27	WJH21WHACMAG.....15	WJH32SSBCAW.....36	WJHT-2JH96DBL.....39	WJH96W.....28	WMAG16WH.....5	WMCH075WH.....10	WUMAG-WJH96AC.....17
WBR125PBCSD.....43	WBR400PBCSD.....43	WBR5400SSBCAB.....47	WJH12ACM58AW.....37	WJH21AC38.....20	WJH21WHMAG.....15	WJH32SSBCU.....32					
WBR125PBCSDAB.....45	WBR400SSBC.....43	WBR5400SSBCAW.....47	WJH12ACM912.....26	WJH21AC4T-300.....20	WJH21YLMAG.....15						
WBR125PBCSDAW.....45	WBR400SSBCSD.....43	WBR5400SSBCSD.....47	WJH12ACMAG.....14	WJH21ACAB.....33	WJH21YLACMAG.....15						
WBR125RDAC.....44	WBR4T125.....41	WBR5400SSBCSDAB.....47	WJH12ACPA.....29	WJH21ACAW.....36	WJH21YLMAG.....15						
WBR125SHORT.....41	WBR4T125BK.....44	WBR5400SSBCSDAW.....47	WJH12ACBPC.....23	WJH21ACM24.....26	WJH32.....19						

700+ products built to support positioning, fastening, protection, segmentation, and organization



# Winnie Industries

MANUFACTURER OF FASTENING SUPPORTS

5420 Newport Dr. Unit 62 • Rolling Meadows, IL 60008

224-993-0011 • sales@winnieindustries.com



**Specify Winnie**

**Winnie Industries** is a family-owned manufacturer based in Chicago, specializing in premium fastening, hanging, magnetic, and electrical solutions. Since 2015, we've built our reputation on hard work, innovation, and uncompromising quality.

We engineer products that simplify installs and meet industry standards across datacom, low-voltage, electrical, mechanical, and HVAC applications—enhancing efficiency and reliability every step of the way.

**Rooted in strong relationships and customer-first service, we support everything from large-scale commercial builds to specialized installations. Professionals trust Winnie Industries for dependable solutions and craftsmanship that deliver.**

