



Bridle Ring

Bridle Ring with Saddle

Organize & Maintain

Fast and cost-effective alternative cable management solution for network cable pathway applications

Features:

- Durable zinc-plated steel
- Quick & easy to install without specialized tools and equipment
- Cost effective alternative to expensive cable tray
- Plenum-rated saddle provide optimal bending radius and support for data cable bundles
- For sensitive fiber optic and data cabling
- Provides support for CAT5e, CAT6, CAT6A, CAT7, low-voltage and fiber optic cables
- 1/4"-20 thread
- Supports up to 50 lbs
- Suitable for use in air handling systems (plenums) in accordance with Section 300.22 (C) and (D) of the National Electric Code
- UL & CUL listed
- Complies with NEC® and TIA/EIA requirements for structured cabling systems



Plenum
RATED



Application:

- Telecom/Voice
- Network/Data
- Broadband, Satellite, CCTV
- Low Voltage/Security
- Fiber

Installation:

- Fastens to any 1/4"-20 threaded clamp or anchor for installation to steel beams or concrete
- Wood screw bridle ring drives directly into wood with no tools required (WBR200SDLWS)
- Used for horizontal or vertical cable runs





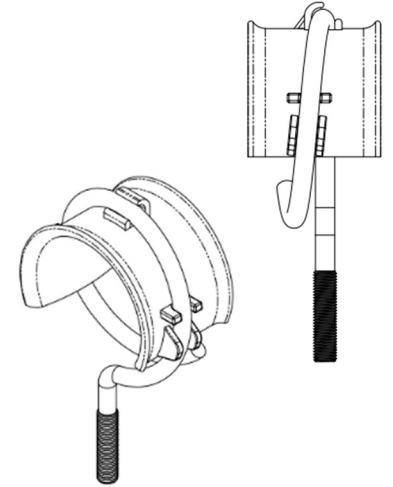
Winnie Industries

MANUFACTURER OF FASTENING SUPPORTS

Bridle Ring

Part Numbers

Part #	Description	Box Qty	12-digit UPC
WBR4T200SDL	2" Bridle Ring with Saddle	100	811443030819
WBR200SDLWS	2" Bridle Ring with Wood Screw & Saddle	100	811443032899
WBR200SSBC	2" Bridle Ring with Saddle & Beam Clamp	100	811443032486
WBR200	2" Bridle Ring Saddle	100	811443031953
WBR4T400SDL	4" Bridle Ring with Saddle	100	811443032479
WBR400	4" Bridle Ring Saddle	100	811443032929



- | Provides great support, eliminating stress, and following the natural curves and bends of cable |
- | Can be used on walls and ceilings, making them ideal for multi-directional cable runs |
- | Designed with an open loop for easy cable installation |
- | When using a bridle ring with high performance data cable, a saddle is required to ensure proper bend |
- | Non-continuous supports may not exceed spacing of 5' per TIA 569-C.9.7 |

Related Items

Part #	Description
WPBC	Pressed Beam Clamp
WSSBC	Spring Steel Beam Clamp
WMBC4T-WM	Wide Beam Clamp
075GRIPTAPE	3/4" Grip Tape Black

Part #	Description
WANGLE4T	¼-20 Threaded Angle Clip w/ ¼" Hole
WACTUATED4T	¼-20 Threaded Angle Clip with Powder Actuated Pin
WM24	Hammer On Clamp (1/8" – 1/4" Flange)

Check out our Stainless Steel Bridle Ring – combine with saddle for outdoor and harsh environment applications

Specify Winnie...

- ✓ Since 2015
- ✓ Family-Owned & Operated
- ✓ Personal & Friendly Customer Service

Consult & follow local codes and practices



WBR4T125SS



WBR4T200SS



WBR200SDLWS



WBR200



WBR200SSBC

© Winnie Industries, LLC. All Rights Reserved. Drawings are proprietary and may not be copied or used without express written permission.

Rev 202403

engineered and manufactured to make installs easier

winnieindustries.com



5420 Newport Dr. Unit 62
Rolling Meadows, IL 60008

224-993-0011
sales@winnieindustries.com