



Attachment

Malleable Iron Beam Clamp

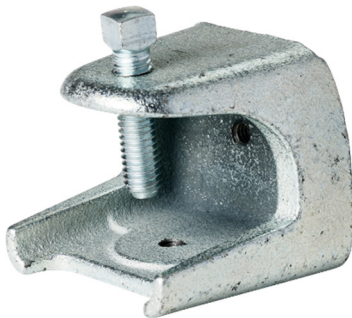
Provides an easy to install mounting base to an I-beam, girder, or other structural member, saving time and effort on the job site



Features:



- High-strength malleable iron
- Zinc-plating provides corrosion resistance
- Universal design allows for use with a multitude of cable management hardware
- Designed with a wide jaw opening to provide a secure and sturdy grip that will not slip off the beam when tightened
- Lightweight design makes it easy to handle and install
- 3/4" jaw opening fits flanges up to 3/4" thick (WMBC4T)
- 1-3/8" wide jaw opening fits flanges up to 1-3/8" thick (WMBC4T-WM)
- Tapped with 1/4"-20 threads on side & bottom
- UL & CUL listed



Application:

- Provides base support for 1/4"-20 hanging rod, j hooks, bridle rings, conduit hangers, ceiling wire, and other cable management hardware

Installation:

- Attaches to girder or I beam flange up to
- Secure with the included square head screw type bolt using a socket driver

Part Numbers

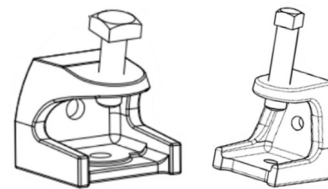
Part #	Description	Box Qty	12-digit UPC
WMBC4T	Malleable Iron Beam Clamp, 3/4" Mouth, 1/4"-20	50	811443030574
WMBC4T-WM	Malleable Iron Beam Clamp, 1-3/8" Wide Mouth, 1/4"-20	25	811443032356

Consult & follow local codes and practices



Specify Winnie...

- ✓ Since 2015
- ✓ Family-Owned & Operated
- ✓ Personal & Friendly Customer Service



© Winnie Industries, LLC. All Rights Reserved. Drawings are proprietary and may not be copied or used without express written permission.

Rev 202406

engineered and manufactured to make installs easier

winnieindustries.com



5420 Newport Dr. Unit 62
Rolling Meadows, IL 60008

224-993-0011
sales@winnieindustries.com