



# Winnie Industries

MANUFACTURER OF FASTENING SUPPORTS

## Magnetic

### Magnetic Locking Gate Cable Holder 16lb



Magnetic solution that quickly, effortlessly secures & routes cables using an innovative locking gate



#### Features:

- Exceptional strength neodymium rare earth magnet provides a secure hold onto any ferromagnetic surface
- Available in 1/2" & 3/4" widths with 16lb magnet
- Locking gate snaps closed to hold cables in place
- Protective steel cup directs magnetic field upwards increasing its magnetic pull force
- Zinc-plated cup provides corrosion resistance
- Sticks through oil, grease, and dirty areas
- Magnets will not interfere with ethernet or Wi-Fi signals
- Provides the flexibility to be repositioned where needed
- Manufactured from sturdy flame-retardant nylon
- Plenum rated for use in air handling systems
- UV resistant to avoid degradation caused by ultraviolet rays\*
- Long-lasting performance in a variety of applications
- UL & CUL listed

#### Application:

- Holding or mounting applications for wire & cable, innerduct, tubing, etc
- Ideal for cable management, POS displays, marketing, exhibition displays, etc

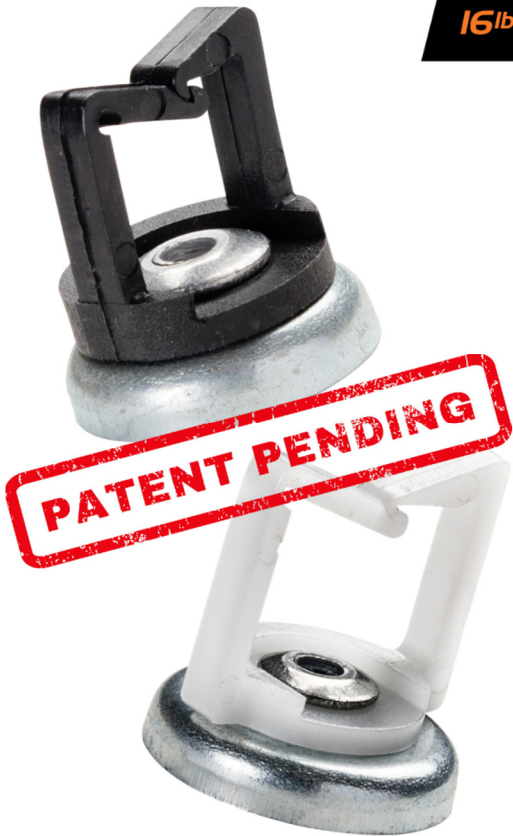
#### Installation:

- Attaches to steel beams, metal joists, electrical boxes, security enclosures and other ferromagnetic surfaces

#### Magnet Specifications:

- Size: 19mm x 4.5mm
- Grade: N45M
- Magnet Plating: NiCuNi
- Temperature Tolerance: -40°F - 212°F (-40°C - 100°C)
- Cup: Zinc-plated steel

\*WMCHxxxBK only



Plenum  
RATED

engineered and manufactured to make installs easier

winnieindustries.com



5420 Newport Dr. Unit 62  
Rolling Meadows, IL 60008

224-993-0011  
sales@winnieindustries.com



## Magnetic

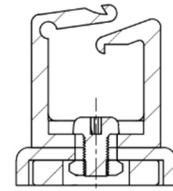
### Part Numbers

| Part #       | Description   | Box Qty | 12-digit UPC |
|--------------|---|---------|--------------|
| WMCH050BK    | ½" Magnetic Cable Holder, UV, Black, 16 lb                    | 100     | 811443032004 |
| WMCH050BK-10 | ½" Magnetic Cable Holder, UV, Black, 16 lb, Retail Bag, 10 Pk | 10      | 811443032998 |
| WMCH050WH    | ½" Magnetic Cable Holder, White, 16 lb                        | 100     | 811443032028 |
| WMCH050WH-10 | ½" Magnetic Cable Holder, White, 16 lb, Retail Bag, 10 Pk     | 10      | 811443033001 |
| WMCH075BK    | ¾" Magnetic Cable Holder, UV, Black, 16 lb                    | 100     | 811443032011 |
| WMCH075BK-10 | ¾" Magnetic Cable Holder, UV, Black, 16 lb, Retail Bag, 10 Pk | 10      | 811443033018 |
| WMCH075WH    | ¾" Magnetic Cable Holder, White, 16 lb                        | 100     | 811443032035 |
| WMCH075WH-10 | ¾" Magnetic Cable Holder, White, 16 lb, Retail Bag, 10 Pk     | 10      | 811443033025 |

- | High-quality, compact neodymium magnet with super-strong adhesive force |
- | Use in place of adhesives, allowing for easy, quick installation with no mess |
- | The steel pot increases the force of the magnet giving it an incredible hold for its size |
- | Gain time and save money in addition to ease and safety enhancements by applying magnets to your application |
- | Ideal for use in server rooms, workstations, classrooms, offices, warehouses, factories |

### Related Items

| Part #    | Description                                   |
|-----------|---|
| WMCH100BK | 1" Magnetic Cable Holder, UV, Black, 26 lb    |
| WMCH100WH | 1" Magnetic Cable Holder, White, 26 lb        |
| WMCH125BK | 1 ¼" Magnetic Cable Holder, UV, Black, 26 lb  |
| WMCH125WH | 1 ¼" Magnetic Cable Holder, White, 26 lb      |
| WMAG16    | 16 lb Counterbored Mounting Pot Magnet        |
| WMAG16BK  | 16 lb Counterbored Mounting Pot Magnet, Black |



### Specify Winnie...

- ✓ Since 2015
- ✓ Family-Owned & Operated
- ✓ Personal & Friendly Customer Service

### Organize & Maintain



Consult & follow local codes and practices



### Safety:

- + Please handle neodymium magnets with care
- + Keep neodymium magnets away from anyone with a pacemaker
- + Magnets are not toys and should be kept away from children and pets
- + Large powerful magnets can pinch your fingers or cause other injuries, use caution

© Winnie Industries, LLC. All Rights Reserved. Drawings are proprietary and may not be copied or used without express written permission.

Rev 202405

engineered and manufactured to make installs easier

winnieindustries.com



5420 Newport Dr. Unit 62  
Rolling Meadows, IL 60008

224-993-0011  
sales@winnieindustries.com