



## Attachment

### Hammer on Beam Clamp for Bottom Mount



Provides a mounting base for securely and easily fastening hardware to a steel beam



**WM24**  
For 1/8" to 1/4" flange



**WM58**  
For 5/16" to 1/2" flange



**WM912**  
For 9/16" to 3/4" flange

#### Features:

- Manufactured from spring steel with black epoxy coating
- Designed to fit flanges 1/8" to 3/4" thick
- Use with a multitude of cable management hardware
- 1/4-20 thread on back & bottom
- Accommodates 1/4" threaded rod
- Bottom of clamp is designed with slots to accept a standard 50lb cable tie
- UL & CUL listed

#### Application:

- Provides base support to attach boxes, fixtures, j hooks, bridle rings, s hooks, chain or other apparatus from beam flanges
- Used to suspend building services installations including cable tray, conduit, pipework, etc

#### Installation:

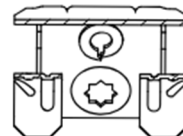
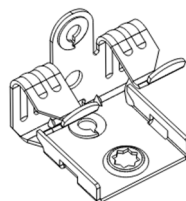
- Attaches to beam flange 1/8" to 3/4" thick
- Secure to beam flange using hammer

#### Part Numbers

Part #	Description	Box Qty	12-digit UPC
WM24	Hammer on Beam Clamp for 1/8"-1/4" Flange, Bottom Mount	100	811443030550
WM58	Hammer on Beam Clamp for 5/16"-1/2" Flange, Bottom Mount	100	811443030567
WM912	Hammer on Beam Clamp for 9/16"-3/4" Flange, Bottom Mount	100	811443032349

#### Specify Winnie...

- ✓ Since 2015
- ✓ Family-Owned & Operated
- ✓ Personal & Friendly Customer Service



Consult & follow local codes and practices



WM912 is not UL listed

© Winnie Industries, LLC. All Rights Reserved. Drawings are proprietary and may not be copied or used without express written permission.



Rev 202405

engineered and manufactured to make installs easier

winnieindustries.com



5420 Newport Dr. Unit 62  
Rolling Meadows, IL 60008

224-993-0011  
sales@winnieindustries.com