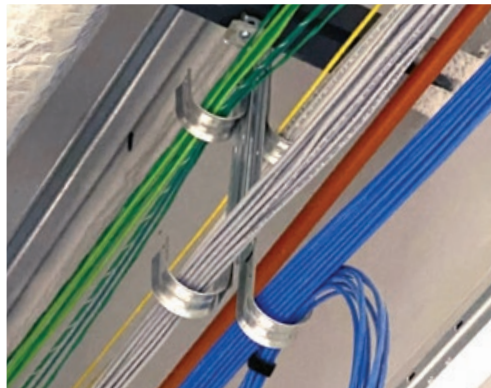
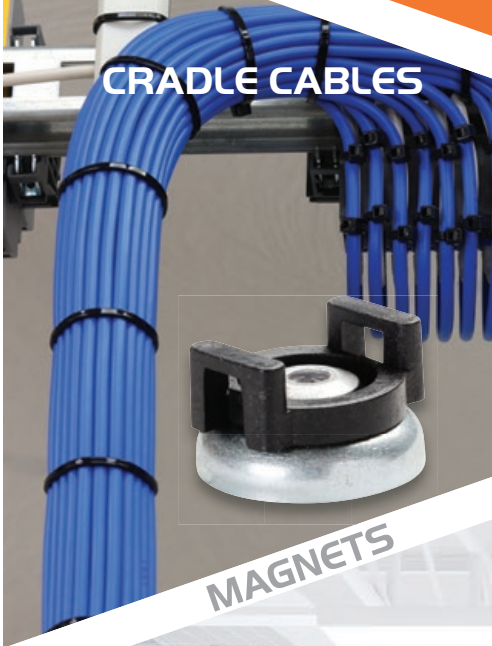




Winnie Industries

MANUFACTURER OF FASTENING SUPPORTS

CRADLE CABLES



STRUCTURED CABLING



DATA COMM

MAGNETS



CABLE HOLDERS

MAGNETIC CABLE HOLDERS

WCH050WH



1/2" Cable Holder with Locking Gate Feature,
5mm Center Hole, White

WCH050BK



1/2" Cable Holder with Locking Gate Feature,
5mm Center Hole, Black

WMCH050WH



1/2" Magnetic Cable Holder with Locking Gate
Feature, White 16 lb. Magnet

WMCH050BK



1/2" Magnetic Cable Holder with Locking Gate
Feature, Black 16 lb. Magnet

WCH075WH



3/4" Cable Holder with Locking Gate Feature,
5mm Center Hole, White

WCH075BK



3/4" Cable Holder with Locking Gate Feature,
5mm Center Hole, Black

WMCH075WH



3/4" Magnetic Cable Holder with Locking Gate
Feature, White 16 lb. Magnet

WMCH075BK



3/4" Magnetic Cable Holder with Locking Gate
Feature, Black 16 lb. Magnet

WCH100WH



1" Cable Holder with Locking Gate Feature,
5mm Center Hole, White

WCH100BK



1" Cable Holder with Locking Gate Feature,
5mm Center Hole, Black

WMCH100WH



1" Magnetic Cable Holder with Locking Gate
Feature, White 26 lb. Magnet

WMCH100BK



1" Magnetic Cable Holder with Locking Gate
Feature, Black 26 lb. Magnet

WCH125WH



1 1/4" Cable Holder with Locking Gate Feature,
5mm Center Hole, White

WCH125BK



1 1/4" Cable Holder with Locking Gate Feature,
5mm Center Hole, Black

WMCH125WH



1 1/4" Magnetic Cable Holder with Locking Gate
Feature, White 26 lb. Magnet

WMCH125BK



1 1/4" Magnetic Cable Holder with Locking Gate
Feature, Black 26 lb. Magnet

MAGNETIC J-HOOKS



WJH12MAG

3/4" J Hook with Side Mounted 100 lb. Magnet



WJH21MAG

1 5/16" J Hook with Side Mounted 100 lb. Magnet



WJH32MAG

2" J Hook with Side Mounted 100 lb. Magnet



WJH64MAG

4" J Hook with Side Mounted 100 lb. Magnet



WJH96MAG

6" J Hook with Side Mounted 100 lb. Magnet



WJH12ACMAG

3/4" J Hook with Top Mounted 100 lb. Magnet



WJH21ACMAG

1 5/16" J Hook with Top Mounted 100 lb. Magnet



WJH32ACMAG

2" J Hook with Top Mounted 100 lb. Magnet



WJH64ACMAG

4" J Hook with Top Mounted 100 lb. Magnet



WJH96ACMAG

6" J Hook with Top Mounted 100 lb. Magnet



WBRO75MAG

3/4" Magnetic Bridle Ring, Small Standoff 26 lb Magnet



WBRO75MAGBK

3/4" Magnetic Bridle Ring, Small Standoff 26 lb Magnet, Black



WBRI25MAG

1 1/4" Magnetic Bridle Ring, Small Standoff 100 lb Magnet



WBR200MAG

2" Magnetic Bridle Ring, Small Standoff 100 lb Magnet



WBR200SDLMAG

2" Magnetic Bridle Ring, with Support Saddle, Small Standoff 100 lb Magnet



WBRL075MAG

3/4" Magnetic Bridle Ring, 1.5" From Base of Magnet 26 lb Magnet



WBRL125MAG

1 1/4" Magnetic Bridle Ring, 1.5" From Base of Magnet 100 lb Magnet



WBRL200MAG

2" Magnetic Bridle Ring, 1.5" From Base of Magnet 100 lb Magnet



WBRL400MAG

4" Magnetic Bridle Ring, 1.5" From Base of Magnet 100 lb Magnet

INVENTORY ON HAND

QUICK TURNAROUND

WDR200MAG



Magnetic 2" Distribution Ring, Two 100 lb Magnets attached

WDR300MAG



Magnetic 3" Distribution Ring, Two 100 lb Magnets attached

WDR500MAG



Magnetic 5" Distribution Ring, Two 100 lb Magnets attached

WMAG26HLBK



26 lb Magnetic Hook and Loop Mount, Fits 3/4" Hook and Loop Tape and Heavy Duty Cable Ties, UV Black

WMAG26HLWH



26 lb Magnetic Hook and Loop Mount, Fits 3/4" Hook and Loop Tape and Heavy Duty Cable Ties, White

WMAG5CTBK



5 lb Magnetic Cable Tie Mount, Black

WMAG16CTUV



16 lb Magnetic Cable Tie Mount, UV Black

WMAG16CTWH



16 lb Magnetic Cable Tie Mount, White

WMAG26CTUV



26 lb Magnetic Cable Tie Mount, UV Black

WMAG26CTWH



26 lb Magnetic Cable Tie Mount, White

WMAG1420



100 lb Mounting Magnet with 1/4-20 Internal Threads

WMAG1420M



100 lb Mounting Magnet with 1/4-20 Threaded Stud

WMAG4TFW



2" Fender Washer with 4 Riveted 26 lb Mounting Magnets, 1/4-20 Threaded Middle

WMAG1420HLBK



100 lb Magnetic Hook and Loop Mount, Fits 3/4" Hook and Loop Tape and Heavy Duty Cable Ties, UV Black

WMAG1420HLWH



100 lb Magnetic Hook and Loop Mount, Fits 3/4" Hook and Loop Tape and Heavy Duty Cable Ties, White

WMAG26HOOK



26 lb Magnetic Hook Magnet

WMAG16



16 lb Mounting Magnet with 5mm Diameter Inside Steel Cup Hole, 3/4" Outside Diameter Steel Cup

WMAG26



26 lb Mounting Magnet with 5mm Diameter Inside Steel Cup Hole, 1" Outside Diameter Steel Cup

NEW WMAG1420UHD



Ultra Heavy Duty Mounting Magnet, 1/4-20 threaded inside, Specially Charged and **Fastens Great To Thin Metal**



WJH12 3/4" J Hook
WJH21 1 5/16" J Hook
WJH32 2" J Hook
WJH64 4" J Hook
WJH96 6" J Hook

Available in White, Red, Blue, Green, Purple, Black & 316 Stainless Steel.

Available Attachments



Additional Features



All WJH21, WJH32, WJH64 styles include retaining clips. WJH12 has a bendable tab.



All J Hook attachments use screw and locknut construction, for easy removal.



All J Hooks are easily customized for any application



WJH12

3/4" Basic J Hook



WJH12SS

3/4" Basic J Hook
316 Stainless Steel



WJH21

1 5/16" Basic J Hook



WJH21SS

1 5/16" Basic J Hook
316 Stainless Steel



WJH32

2" Basic J Hook



WJH32SS

2" Basic J Hook
316 Stainless Steel



WJH64

4" Basic J Hook



WJH64SS

4" Basic J Hook
316 Stainless Steel



WJH96

6" Basic J Hook

ASK ABOUT HAVING
YOUR J HOOKS IN ANY
COLOR!

SEE PAGE 4 FOR
MAGNETIC J HOOKS



WJHI2ACM9I2

3/4" J Hook with Hammer
on 9/16-3/4" Flange, 360
Degree Rotation



WJHI2AFI4

3/4" J Hook with Hammer
on 1/8-1/4" Angled
Flange



WJHI2W

3/4" J Hook With Batwing



WJHI2AC

3/4" J Hook With 90
Degree Angle Clip And 1/4"
Mounting Hole



WJH2IACM9I2

1 5/16" J Hook with Hammer
on 9/16-3/4" Flange,
360 Degree Rotation



WJH2IAFI4

1 5/16" J Hook with
Hammer on 1/8-1/4"
Angled Flange



WJH2IW

1 5/16" J Hook With Batwing



WJH2IAC

1 5/16" J Hook With
90 Degree Angle Clip
And 1/4" Mounting Hole



WJH32ACM9I2

2" J Hook with Hammer
on 9/16-3/4" Flange, 360
Degree Rotation



WJH32AFI4

2" J Hook with
Hammer on 1/8-1/4"
Angled Flange



WJH32W

2" J Hook With Batwing



WJH32AC

2" J Hook With 90
Degree Angle Clip And
1/4" Mounting Hole



WJH64ACM9I2

4" J Hook with Hammer
on 9/16-3/4" Flange,
360 Degree Rotation



WJH64AFI4

4" J Hook with Hammer
on 1/8-1/4" Angled
Flange



WJH64W

4" J Hook With Batwing



WJH64AC

4" J Hook With 90
Degree Angle Clip And
1/4" Mounting Hole



WJH96ACM9I2

6" J Hook with Hammer
on 9/16-3/4" Flange,
360 Degree Rotation



WJH96AFI4

6" J Hook with Hammer
on 1/8-1/4" Angled
Flange



WJH96W

6" J Hook With Batwing



WJH96AC

6" J Hook With 90
Degree Angle Clip And
1/4" Mounting Hole



WJHI2ACPA

3/4" J Hook With 90 Degree Angle Clip And Pre Attached Nail



WJHI2CC075

3/4" J Hook With 3/4" Conduit Clamp Attached



WJHI2HOK-24

3/4" J Hook With 1/8-1/4" Hammer On Flange



WJHI2ACM24

3/4" J Hook With 1/8-1/4" Hammer On Flange, 360 Degree Rotation



WJH2IACPA

1 5/16" J Hook With 90 Degree Angle Clip And Pre Attached Nail



WJH2ICC075

1 5/16" J Hook With 3/4" Conduit Clamp Attached



WJH2IHOK-24

1 5/16" J Hook With 1/8-1/4" Hammer On Flange



WJH2IACM24

1 5/16" J Hook With 1/8-1/4" Hammer On Flange, 360 Degree Rotation



WJH32ACPA

2" J Hook With 90 Degree Angle Clip And Pre Attached Nail



WJH32CC075

2" J Hook With 3/4" Conduit Clamp Attached



WJH32HOK-24

2" J Hook With 1/8-1/4" Hammer On Flange



WJH32ACM24

2" J Hook With 1/8-1/4" Hammer On Flange, 360 Degree Rotation



WJH64ACPA

4" J Hook With 90 Degree Angle Clip And Pre Attached Nail



WJH64CC075

4" J Hook With 3/4" Conduit Clamp Attached



WJH64HOK-24

4" J Hook With 1/8-1/4" Hammer On Flange



WJH64ACM24

4" J Hook With 1/8-1/4" Hammer On Flange, 360 Degree Rotation



WJH96ACPA

6" J Hook With 90 Degree Angle Clip And Pre Attached Nail



WJH96CC075

6" J Hook With 3/4" Conduit Clamp Attached



WJH96HOK-24

6" J Hook With 1/8-1/4" Hammer On Flange



WJH96ACM24

6" J Hook With 1/8-1/4" Hammer On Flange, 360 Degree Rotation

**WJHI2HOK-58**

3/4" J Hook With 5/16-1/2"
Hammer On Flange

**WJHI2ACM58**

3/4" J Hook With 5/16-1/2"
Hammer On Flange,
360 Degree Rotation

**WJHI2SSBC**

3/4" J Hook With Spring Steel
Beam Clamp

**WJHI2ACSSBC**

3/4" J Hook With Spring
Steel Beam Clamp,
360 Degree Rotation

**WJH2IHOK-58**

1 5/16" J Hook With 5/16-1/2"
Hammer On Flange

**WJH2IACM58**

1 5/16" J Hook With 5/16-1/2"
Hammer On Flange,
360 Degree Rotation

**WJH2ISSBC**

1 5/16" J Hook With Spring
Steel Beam Clamp

**WJH2IACSSBC**

1 5/16" J Hook With Spring
Steel Beam Clamp,
360 Degree Rotation

**WJH32HOK-58**

2" J Hook With 5/16-1/2"
Hammer On Flange

**WJH32ACM58**

2" J Hook With 5/16-1/2"
Hammer On Flange,
360 Degree Rotation

**WJH32SSBC**

2" J Hook With Spring Steel
Beam Clamp

**WJH32ACSSBC**

2" J Hook With Spring
Steel Beam Clamp, 360
Degree Rotation

**WJH64HOK-58**

4" J Hook With 5/16-1/2"
Hammer On Flange

**WJH64ACM58**

4" J Hook With 5/16-1/2"
Hammer On Flange,
360 Degree Rotation

**WJH64SSBC**

4" J Hook With Spring
Steel Beam Clamp

**WJH64ACSSBC**

4" J Hook With 1/8-1/4"
Hammer On Flange,
360 Degree Rotation

**WJH96HOK-58**

6" J Hook With 5/16-1/2"
Hammer On Flange

**WJH96ACM58**

6" J Hook With 5/16-1/2"
Hammer On Flange,
360 Degree Rotation

**WJH96SSBC**

6" J Hook With Spring
Steel Beam Clamp

**WJH96ACSSBC**

6" J Hook With Spring
Steel Beam Clamp, 360
Degree Rotation



WJH12PBC

¾" J Hook With Pressed Beam Clamp



WJH12ACPBC

¾" J Hook With Pressed Beam Clamp, 360 Degree Rotation



WJH12BK

¾" Basic J Hook, Black



WJH12WH

¾" Basic J Hook, White



WJH21PBC

1 5/16" J Hook With Pressed Beam Clamp



WJH21ACPBC

1 5/16" J Hook With Pressed Beam Clamp, 360 Degree Rotation



WJH21BK

1 5/16" Basic J Hook, Black



WJH21WH

1 5/16" Basic J Hook, White



WJH32PBC

2" J Hook With Pressed Beam Clamp



WJH32ACPBC

2" J Hook With Pressed Beam Clamp, 360 Degree Rotation



WJH32BK

2" Basic J Hook, Black



WJH32WH

2" Basic J Hook, White



WJH64PBC

4" J Hook With Pressed Beam Clamp



WJH64ACPBC

4" J Hook With Pressed Beam Clamp, 360 Degree Rotation



WJH64BK

4" Basic J Hook, Black



WJH64WH

4" Basic J Hook, White



WJH96PBC

6" J Hook With Pressed Beam Clamp



WJH96ACPBC

6" J Hook With Pressed Beam Clamp, 360 Degree Rotation



WJH96BK

6" Basic J Hook, Black



WJH96WH

6" Basic J Hook, White

J HOOKS

DATA HOOK



WJH12RED

3/4" Basic J Hook, Red



WJH12BLUE

3/4" Basic J Hook, Blue



WJH12GREEN

3/4" Basic J Hook, Green



WJH12PURPLE

3/4" Basic J Hook, Purple



WJH21RED

1 5/16" Basic J Hook, Red



WJH21BLUE

1 5/16" Basic J Hook, Blue



WJH21GREEN

1 5/16" Basic J Hook, Green



WJH21PURPLE

1 5/16" Basic J Hook, Purple



WJH32RED

2" Basic J Hook, Red



WJH32BLUE

2" Basic J Hook, Blue



WJH32GREEN

2" Basic J Hook, Green



WJH32PURPLE

2" Basic J Hook, Purple



WJH64RED

4" Basic J Hook, Red



WJH64BLUE

4" Basic J Hook, Blue



WJH64GREEN

4" Basic J Hook, Green



WJH64PURPLE

4" Basic J Hook, Purple



WJH96RED

6" Basic J Hook, Red



WJH96BLUE

6" Basic J Hook, Blue



WJH96GREEN

6" Basic J Hook, Green



WJH96PURPLE

6" Basic J Hook, Purple

J HOOK TREES

WJHT-2JH2ISD



2- 1 5/16" J Hooks
on One Side of a
J Hook Tree

WJHT-2JH32SD



2- 2" J Hooks on
One Side of a
J Hook Tree

WJHT-3JH2ISD



3- 1 5/16" J Hooks on
One Side of a
J Hook Tree

WJHT-3JH32SD



3- 2" J Hooks on
One Side of a
J Hook Tree

WJHT-4JH2ISD



4- 1 5/16" J Hooks
on One Side of a
J Hook Tree

WJHT-4JH32SD



4- 2" J Hooks on
One Side of a
J Hook Tree

WJHT-4JH2IDBL



4- 1 5/16" J Hooks
Doubled Up on a
J Hook Tree

WJHT-4JH32DBL



4- 2" J Hooks
Doubled Up on a
J Hook Tree



WJHT-2JH64SD

2- 4" J Hooks on One Side
of a J Hook Tree



WJHT-3JH96SD

3- 6" J Hooks on One Side
of a J Hook Tree



WJHT-4JH64SD

4- 4" J Hooks on One Side
of a J Hook Tree



WJHT-4JH64DBL

4- 4" J Hooks Doubled Up
On A J Hook Tree



WJHT-2JH96SD

2- 6" J Hooks on One
Side of a J Hook Tree



WJHT-3JH64SD

3- 4" J Hooks on One
Side of a J Hook Tree



WJHT-4JH96SD

4- 6" J Hooks on One
Side of a J Hook Tree



WJHT-4JH96SD

4- 6" J Hooks on One
Side of a J Hook Tree



WJHT-2JH2IDBL

2- 1 5/16" J Hooks
Doubled Up on a
J Hook Tree



WJHT-2JH32DBL

2- 2" J Hooks Doubled
Up On A J Hook Tree



WJHT-2JH64DBL

2- 4" J Hooks Doubled
Up on a J Hook Tree



WJHT-2JH96DBL

2- 6" J Hooks Doubled
Up on a J Hook Tree



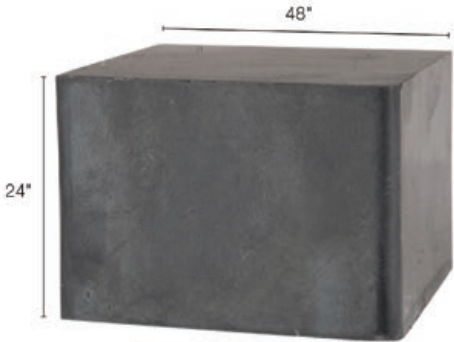
Introducing the Winnie UHD Mag

After years of product development, lab experimentation and testing, Winnie Industries has invented a new procedure to **SUPER-CHARGE** magnets.

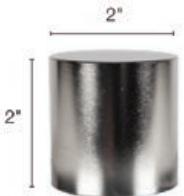
At 3/8" x 2" wide, it is by far the strongest magnet relative to size available! **Secures great to thin metal!**



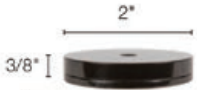
Actual Size



Ceramic Magnet



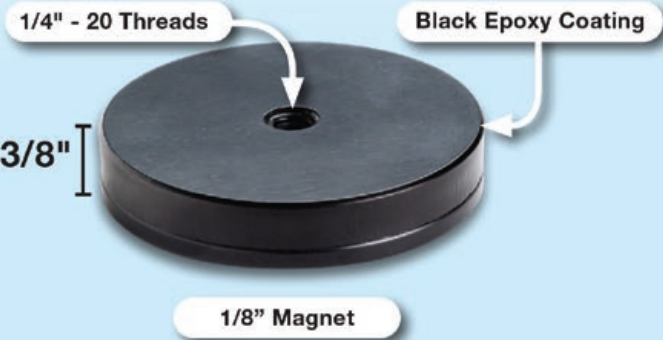
Rare Earth Magnet



Winnie Mag

Comparative Size vs. Strength

WMAG1420UHD



Thousands of practical uses!

When hanging temporary lighting we use the **Winnie UHD Mag**! We put them all over the shop. Incredible strength, versatility and completely removable without any damage!



SEE PAGE 7

BRIDLE RINGS



WBR4TI25

1 1/4" Bridle Ring, 1/4-20
Machine Thread



WBR4TI25SS

1 1/4" Bridle Ring, 1/4-20
Machine Thread, 316
Stainless Steel



WACTBRI25

1 1/4" Bridle Ring with
Preassembled Nail on 90
Degree Angle Bracket



WBRI25AC

1 1/4" Bridle Ring
Preassemble to a 90
Degree Angle Bracket, 1/4"
Mounting Hole



WBR4T200

2" Bridle Ring, 1/4-20
Machine Thread



WBR4T200SS

2" Bridle Ring, 1/4-20
Machine Thread, 316
Stainless Steel



WACTBR200

2" Bridle Ring with
Preassembled Nail on 90
Degree Angle Bracket



WBR200AC

2" Bridle Ring Preassemble to
a 90 Degree Angle Bracket, 1/4"
Mounting Hole



WBR4T400

4" Bridle Ring, 1/4-20
Machine Thread



WBR4T400SS

4" Bridle Ring, 1/4-20
Machine Thread, 316
Stainless Steel



WACTBR400

4" Bridle Ring with
Preassembled Nail on 90
Degree Angle Bracket



WBR400AC

4" Bridle Ring Preassemble
To A 90 Degree Angle
Bracket, 1/4" Mounting Hole



WBRI25WS

1 1/4" Wood Screw
Bridle Ring



WBRI25DW

1 1/4" 10-24 Bridle Ring
Preassembled to Dry
Wall Anchor



WBRI25LONG

1 1/4" Bridle Ring, 1/4-20
Threads, 3" Long



WBRI25SHORT

1 1/4" Bridle Ring,
Short Stem



WBR200WS

2" Wood Screw Bridle
Ring



WBR200DW

2" 10-24 Bridle Ring
Preassembled to Dry
Wall Anchor



WBR200LONG

2" Bridle Ring, 1/4-20
Threads, 3" Long



WBR200SHORT

2" Bridle Ring,
Short Stem

BRIDLE RINGS



WBR125SSBC

1 1/4" Bridle Ring Assembled to Spring Steel Beam Clamp



WBR200SSBC

2" Bridle Ring Assembled to Spring Steel Beam Clamp



WBR400SSBC

4" Bridle Ring Assembled to Spring Steel Beam Clamp



WBR200M24BT

2" Bridle Ring Attached to the Bottom of a 1/8-1/4" Hammer on Beam Clamp



WBR200M58BT

2" Bridle Ring Attached to the Bottom of a 5/16-1/2" Hammer on Beam Clamp



WBRI25PBCBTM

1 1/4" Bridle Ring Attached to the Bottom of the Pressed Steel Beam Clamp



WBRI25PBCSD

1 1/4" Bridle Ring Attached to the Side of the Pressed Steel Beam Clamp



WBRI25BW34

1 1/4" Bridle Ring Attached to Multi-Function Batwing Clip



WBR200BW34

2" Bridle Ring Attached to Multi-Function Batwing Clip



WBR5200

2" Saddle For Bridle Ring, Plenum Rated



WBR4T200SDL

2" Bridle Ring With Saddle Attached, Plenum Rated



WBR4T400SDL

4" Bridle Ring With Saddle Attached, Plenum Rated



WDR200

2" Cast Aluminum Distribution Ring



WDR300

3" Cast Aluminum Distribution Ring



WDR500

5" Cast Aluminum Distribution Ring

**SEE MAGNETIC
BRIDLE RING SADDLES
ON PAGE 5**

**SEE MAGNETIC
D RINGS
ON PAGE 6**

**050GRIPTAPE**

.5" Self-Gripping,
Hook and Loop Tape,
75ft. Roll

**075GRIPTAPE**

.75" Self-Gripping,
Hook and Loop Tape,
75ft. Roll

**WESGI**

Easy Snap Plastic
Grommet For Metal Studs,
1.315" OD

**WESGP**

Easy Snap Plastic
Grommet, Anti Rattle
Protection, For Metal
Studs, 1.315" OD

**WHLMBK**

Hook and Loop Mounting
Cleat, Fits 3/4" Wide Hook
and Loop Tape and Heavy
Duty Cable Ties, Plenum
Rated, Black
Previous Part #CTV100UV

**WHLMWH**

Hook and Loop
Mounting Cleat, Fits 3/4"
Wide Hook and Loop
Tape and Heavy Duty
Cable Ties, Plenum
Rated, White

**WCTMBK**

Black Cable Tie Mount,
Fits Standard
Cable Ties

**WCTMWH**

White Cable Tie Mount,
Fits Standard
Cable Ties

**WM24**

1/8-1/4" Flange Hammer on
Spring Steel, 1/4-20 Keyed
Screw Hole on Back and
Bottom

**WM58**

5/16-1/2" Flange Hammer
on Spring Steel, 1/4-20
Keyed Screw Hole on
Back and Bottom

**WM912**

9/16-3/4" Flange Hammer
on Spring Steel, 1/4-20
Keyed Screw Hole on Back
and Bottom

**WHOK24**

Hammer on 1/8-1/4"
Flange with 1/4" Hole

**WHOK58**

Hammer on 5/16-1/2"
Flange with 1/4" Hole

**WPBC**

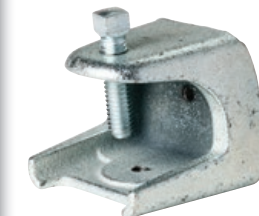
Pressed Steel Beam
Clamp, 1/4-20 Threading
on Back and Bottom

**WSSBC**

Spring Steel Beam Clamp,
1/4-20 and 10-24 Threading

**WMBC4T**

1/4-20 Threading on Back
and Bottom, Malleable
Beam Clamp

**WMBC4T-WM**

1/4-20 Threading on Back
and Bottom, Malleable
Beam Clamp with 1-1/4"
Wide Jaw Opening

**WAF14**

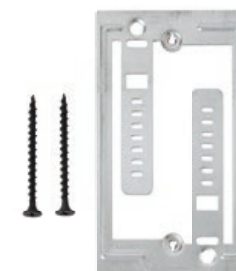
Description: Hammer on
1/8-1/4" Angled Flange,
1/4" Hole

**WAC**

90 Degree Angle Clip, 13
Gauge Steel, Two 1/4" Holes

WACEXT

Angle Bracket Extension Also Use for
J Hook Trees, 1/4" Holes

**WCMB-1**

Communication
Mounting
Bracket 1 Gang

**4-14AL**

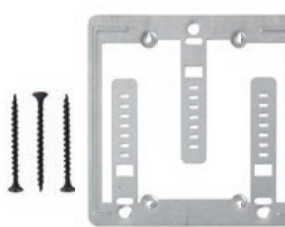
Aluminum Lay-in Ground
Lug, 4-14, Lug Tightening
Torque 20 in-lb

**WANGLE4T**

1/4-20 Eyelet Attached To
90 Degree Angle Clip, 1/4"
Mounting Hole

W512HD

24" Heavy Duty T-Bar Mount 1 1/2" or
2 1/8" Boxes

**WCMB-2**

Communication
Mounting
Bracket 2 Gang

**1-0-8AL**

Aluminum Lay-in Ground Lug,
1/0-8AL, Lug Tightening Torque
50 in-lb

**WACTUATED4T**

1/4-20 Eyelet Attached To 90
Degree Angle Clip With Pre-
attached Nail

**W512HDEXT**

Extension Bracket For
Heavy Duty T-Bar Hanger
Height 3 5/8"

**250MCM-6AL**

Aluminum Lay-in Ground
Lug, 250MCM-6AL, Lug
Tightening Torque 325 in-lb

WBW34

Multi-Function Batwing Clip to #12 Wire to
3/8" Rod, 1/4" Hole and Keyed 1/4-20
and 10-24

W8Z34

Multi-Function Batwing Clip to 1/2", 5/8" Rod,
1/4" Hole and Keyed 1/4-20 and 10-24



Winnie Industries

MANUFACTURER OF FASTENING SUPPORTS



Part # WTBOX232



- » Galvanized steel construction
- » 1/2" and 3/4" knockouts
 - » Eight 1/2" KO
 - » Six TKO's
- » Welded construction
- » Raised ground

- » 42% More space than normal 4 inch square 2-1/8" deep boxes
- » Tested in accordance with UL 514A and CSA C22.2 No. 18.1 metallic outlet boxes
- » Additional room inside box, 43 cubic inches



Patent Pending



2022 NECA
Show Stopper
WINNER



Eliminate Bending



winnieindustries.com



WTBOX232

4" Square sides on Top of T Box. Eight 1/2" KO
Six 1/2-3/4" TKO's



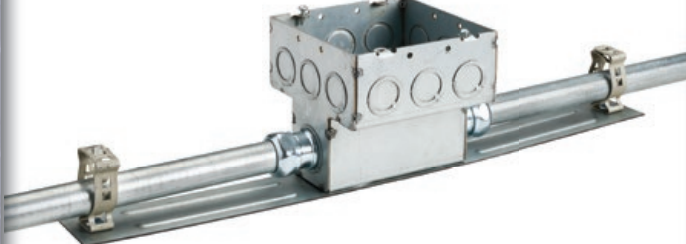
WTBOX257

4-11/16" Square Sides on Top of T Box
Twelve 1/2-3/4" TKO's
Two 3/4-1" TKO



WTBOX232-812

WTBOX232 Pre-attached to the Conduit Box Mount, Preassembled on With Two 1/2" & 3/4" Snap Close Conduit Clamps



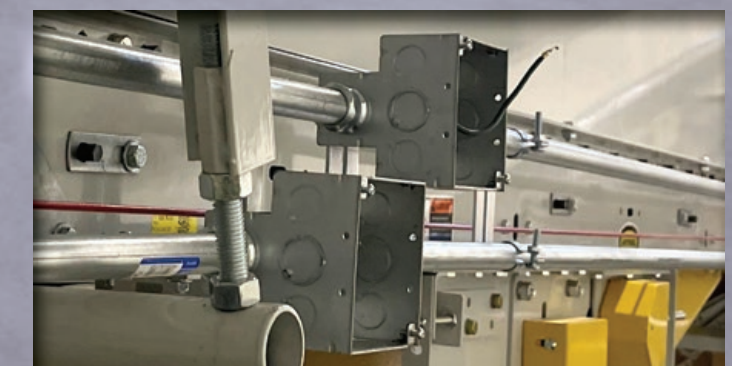
WTBOX257-16M

WTBOX257 Pre-attached to the Conduit Box Mount, Preassembled on With Two 3/4" and 1" Snap Close Conduit Clamps
Conduit and Fittings Not Included.

WCBS

Conduit Box Support Bracket. 18" Long and 2" Wide. 1/4" Mounting Holes







Winnie Industries

MANUFACTURER OF FASTENING SUPPORTS



Winnie Industries was founded in 2015 by Jonathan Winnie, who at the time operated out of his parents garage. With the support of his family, the company has grown to offer a diverse portfolio of products for cable management and hardware needs. Jonathan constantly seeks to innovate better practices, and strives for Winnie Industries to provide excellent customer service. He enjoys spending quality time (even if it is at the warehouse working) with his wife Ainsley and daughters Betsy and Olivia.

**Warehouse: 5420 Newport Drive,
Unit 62
Rolling Meadows, IL 60008**



**Ph: 224-993-0011
Email: sales@winnieindustries.com
URL: www.winnieindustries.com**