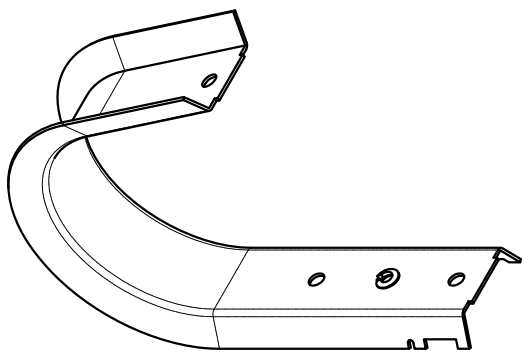
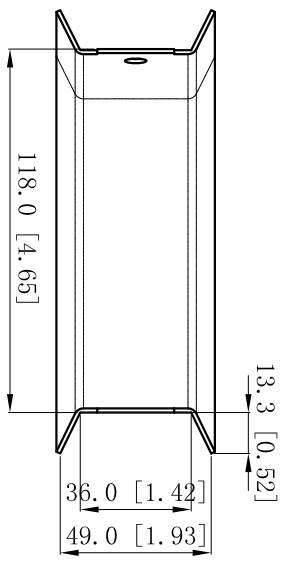
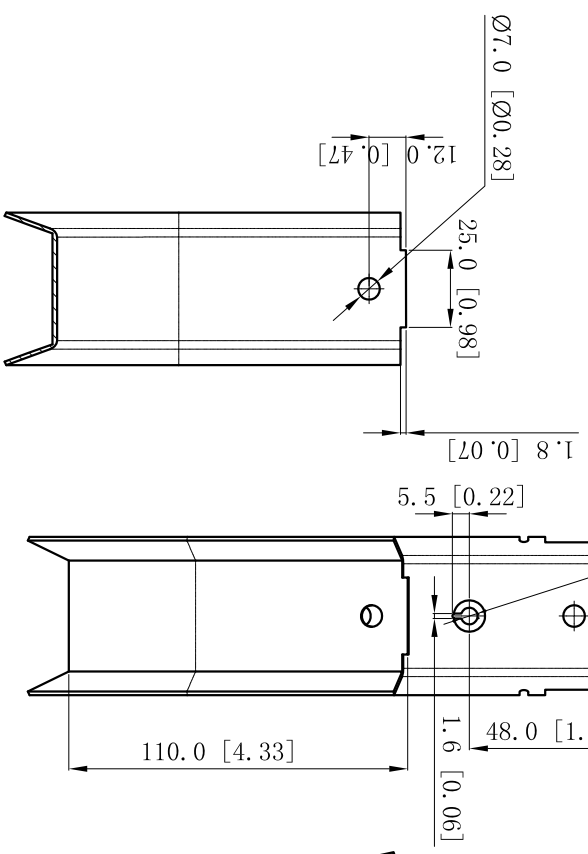


REVISIONS			DATE
SYM.	BY.	REVISIONS	
A			



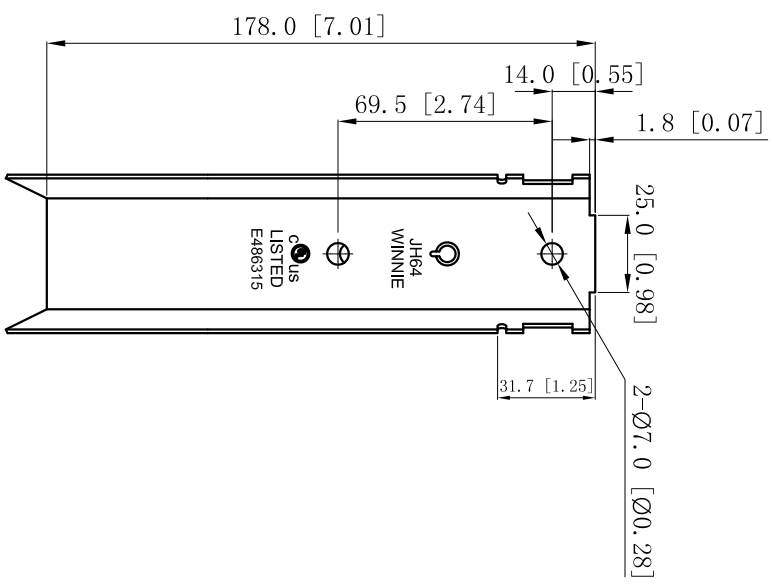
IT IS PUNCHING THREAD HOLE FOR FITTING #1/4-20 SCREW



**CUTAWAY VIEW A-A**

**NOTES:**

1. All dimensions in millimeters and [inches].
2. Free of sharp edge and burrs. max burr 0.127[0.005].
3. Material: Pre galvanized (G60) , Thickness: 1.35mm [0.053] .
4. Qty/Ctn: 100pcs.
5. Every carton need one instruction sheet, the instruction need pring front and back.



<b>WINNIE INDUSTRY</b>		
SIZE	DWG NO.	REV
A4	W-JH64	